

Stratum Lot  
1

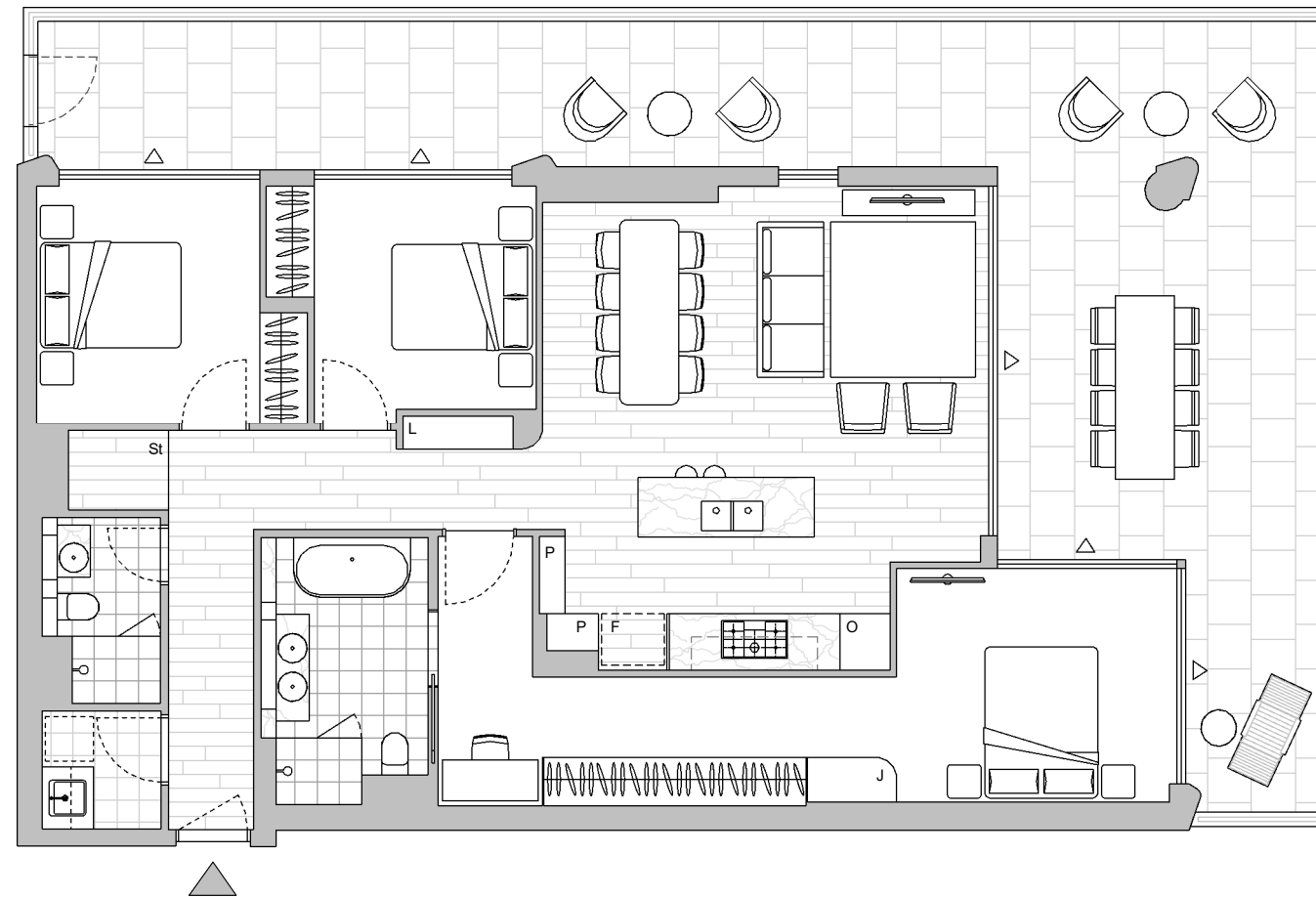
Strata Lot  
1

Colour Scheme: Premium A  
Floor Finish: Timber

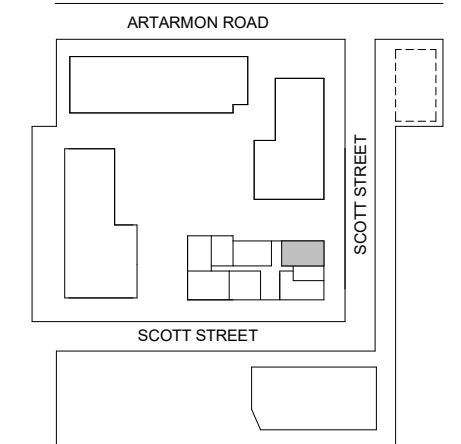
### THREE BEDROOM APARTMENT

Unit Area 114 m<sup>2</sup>  
Balcony Area 65 m<sup>2</sup>  
Total Area 179 m<sup>2</sup>

Areas subject to final survey. Area includes balcony, winter garden and courtyard where applicable. Area excludes associated parking and external storage areas.



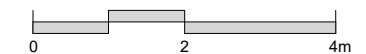
LEVEL 1



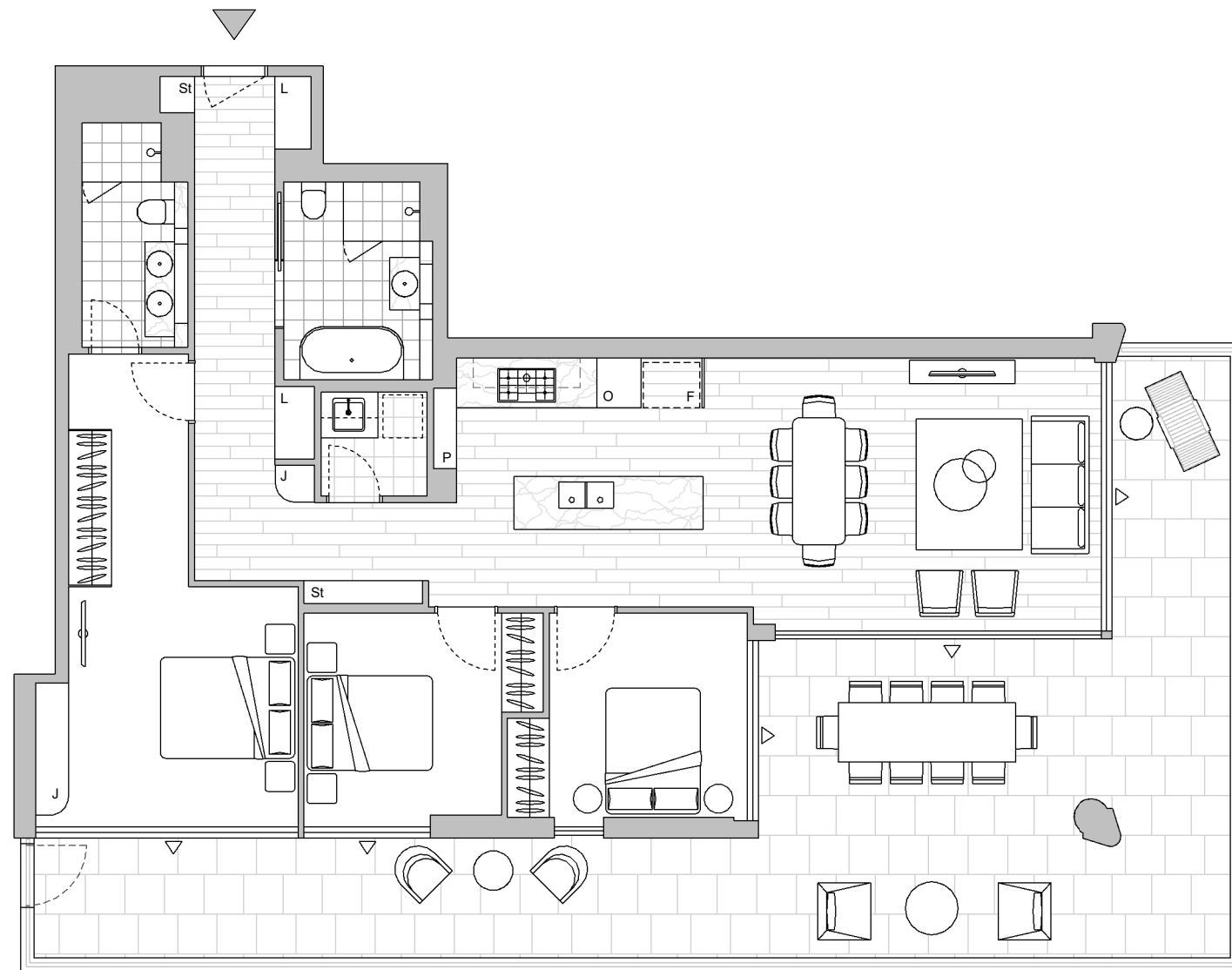
Legend - As Applicable

- |                   |             |            |
|-------------------|-------------|------------|
| ▲ Access          | F Fridge    | J Joinery  |
| △ Balcony Access  | P Pantry    | L Linen    |
| ** Sliding Screen | O Wall Oven | St Storage |
| * Fixed Screen    |             |            |

Provision of a water point, GPO (power point) and gas point has been made available to the balcony.



This floor plan was produced prior to construction and while the information contained herein is believed to be correct it is not guaranteed. Changes will undoubtedly be made in accordance with the contract for sale. The plan does not show additional features such as hot water systems, services, or Bulkheads necessary for services. Dimensions, areas, and scale of floor plans are approximate only and subject to the terms of the Contract. Areas calculated in accordance with the Strata Schemes Development Act 2015. The furniture and furnishings depicted are not included with any sale. Purchasers must refer to the contract for sale for the list of inclusions. Furnishings should not be taken to indicate the final position of power points, TV connection points and the like. All graphics, including design and extent of tile/paver/carpet areas, landscaping, balustrades, louvres, sun shading devices, privacy screens and services equipment are for illustrative purposes only and are not to be relied on as a representative of the final product. Plans do not show additional features within each lot such as letterboxes and side and rear retaining walls. All level changes in the courtyards may not have been shown.



LEVEL 1

Stratum Lot  
1

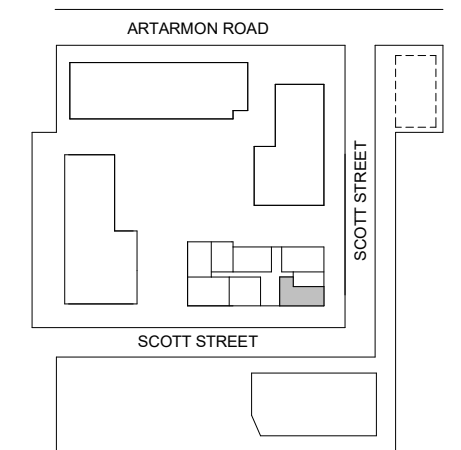
Strata Lot  
3

Colour Scheme: Premium C  
Floor Finish: Timber

**THREE BEDROOM APARTMENT**

Unit Area 114 m<sup>2</sup>  
Balcony Area 64 m<sup>2</sup>  
Total Area 178 m<sup>2</sup>

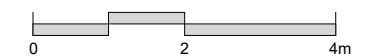
Areas subject to final survey. Area includes balcony, winter garden and courtyard where applicable. Area excludes associated parking and external storage areas.



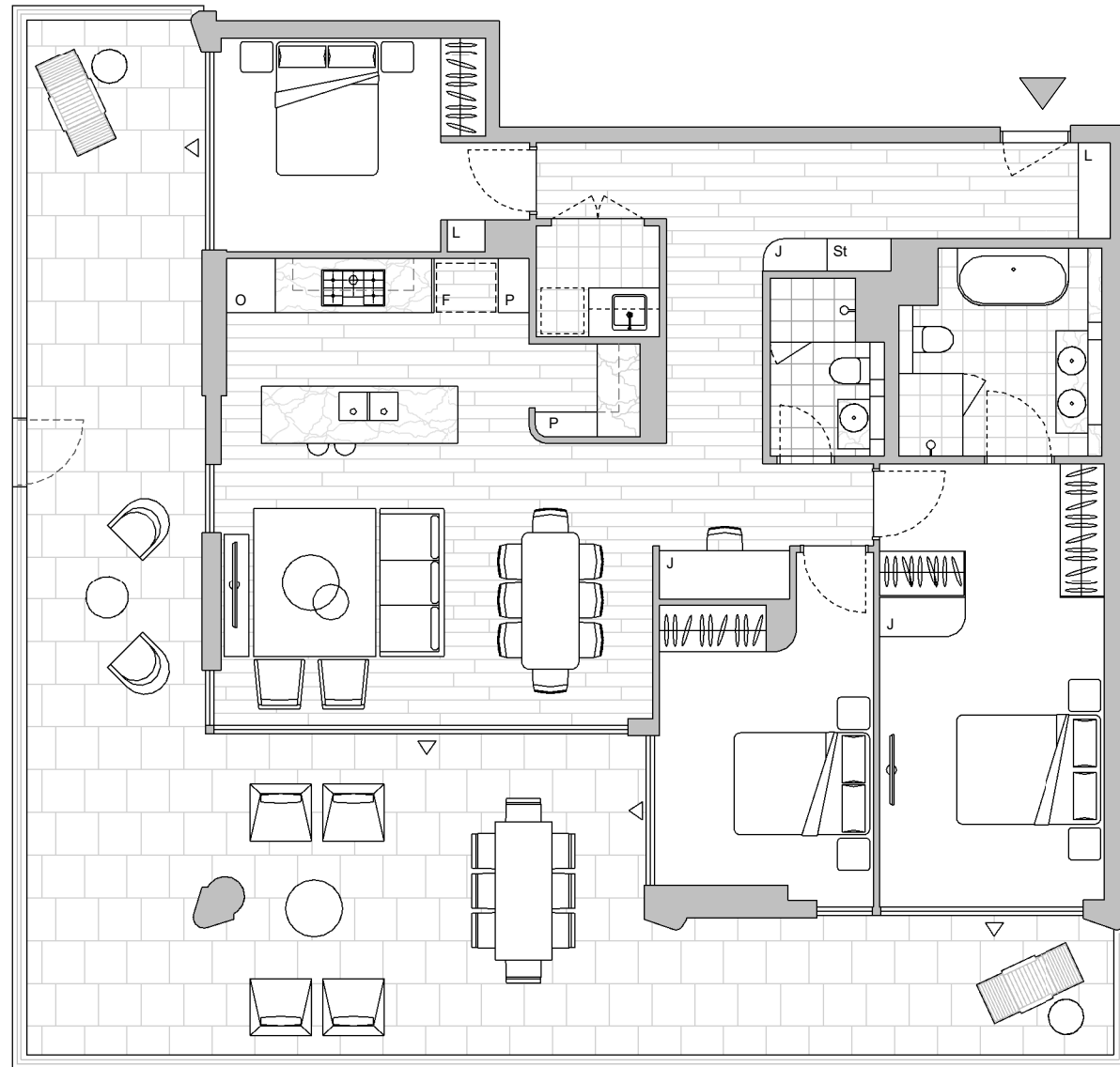
Legend - As Applicable

- |                   |             |            |
|-------------------|-------------|------------|
| ▲ Access          | F Fridge    | J Joinery  |
| △ Balcony Access  | P Pantry    | L Linen    |
| ** Sliding Screen | O Wall Oven | St Storage |
| * Fixed Screen    |             |            |

Provision of a water point, GPO (power point) and gas point has been made available to the balcony.



This floor plan was produced prior to construction and while the information contained herein is believed to be correct it is not guaranteed. Changes will undoubtedly be made in accordance with the contract for sale. The plan does not show additional features such as hot water systems, services, or Bulkheads necessary for services. Dimensions, areas, and scale of floor plans are approximate only and subject to the terms of the Contract. Areas calculated in accordance with the Strata Schemes Development Act 2015. The furniture and furnishings depicted are not included with any sale. Purchasers must refer to the contract for sale for the list of inclusions. Furnishings should not be taken to indicate the final position of power points, TV connection points and the like. All graphics, including design and extent of tile/paver/carpet areas, landscaping, balustrades, louvres, sun shading devices, privacy screens and services equipment are for illustrative purposes only and are not to be relied on as a representative of the final product. Plans do not show additional features within each lot such as letterboxes and side and rear retaining walls. All level changes in the courtyards may not have been shown.



**LEVEL 1**

Stratum Lot  
**1**

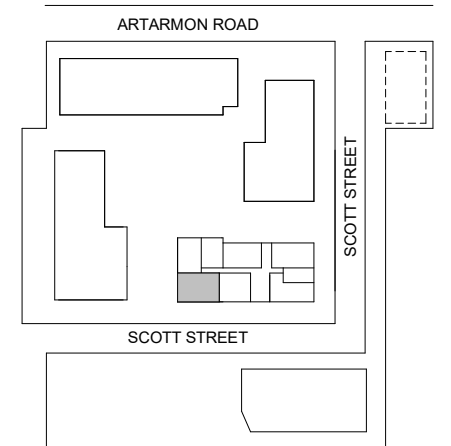
Strata Lot  
**5**

Colour Scheme: Premium C  
Floor Finish: Timber

**THREE BEDROOM + MEDIA APARTMENT**

Unit Area 121 m<sup>2</sup>  
Balcony Area 76 m<sup>2</sup>  
Total Area 197 m<sup>2</sup>

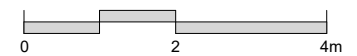
Areas subject to final survey. Area includes balcony, winter garden and courtyard where applicable. Area excludes associated parking and external storage areas.



Legend - As Applicable

- |                   |             |            |
|-------------------|-------------|------------|
| ▲ Access          | F Fridge    | J Joinery  |
| △ Balcony Access  | P Pantry    | L Linen    |
| ** Sliding Screen | O Wall Oven | St Storage |
| * Fixed Screen    |             |            |

Provision of a water point, GPO (power point) and gas point has been made available to the balcony.



This floor plan was produced prior to construction and while the information contained herein is believed to be correct it is not guaranteed. Changes will undoubtedly be made in accordance with the contract for sale. The plan does not show additional features such as hot water systems, services, or Bulkheads necessary for services. Dimensions, areas, and scale of floor plans are approximate only and subject to the terms of the Contract. Areas calculated in accordance with the Strata Schemes Development Act 2015. The furniture and furnishings depicted are not included with any sale. Purchasers must refer to the contract for sale for the list of inclusions. Furnishings should not be taken to indicate the final position of power points, TV connection points and the like. All graphics, including design and extent of tile/paver/carpet areas, landscaping, balustrades, louvres, sun shading devices, privacy screens and services equipment are for illustrative purposes only and are not to be relied on as a representative of the final product. Plans do not show additional features within each lot such as letterboxes and side and rear retaining walls. All level changes in the courtyards may not have been shown.



LEVEL 1

Stratum Lot  
**1**

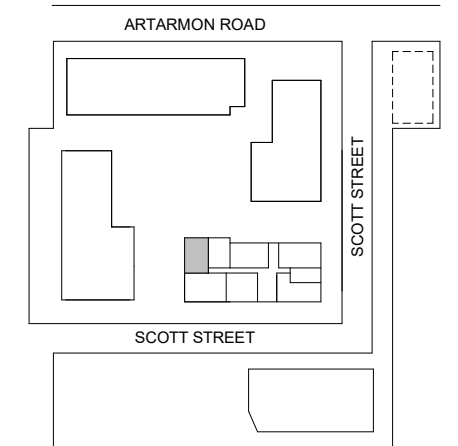
Strata Lot  
**6**

Colour Scheme: Premium A  
Floor Finish: Timber

**THREE BEDROOM APARTMENT**

Unit Area 117 m<sup>2</sup>  
Balcony Area 71 m<sup>2</sup>  
Total Area 188 m<sup>2</sup>

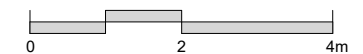
Areas subject to final survey. Area includes balcony, winter garden and courtyard where applicable. Area excludes associated parking and external storage areas.



Legend - As Applicable

- |                   |             |            |
|-------------------|-------------|------------|
| ▲ Access          | F Fridge    | J Joinery  |
| △ Balcony Access  | P Pantry    | L Linen    |
| ** Sliding Screen | O Wall Oven | St Storage |
| * Fixed Screen    |             |            |

Provision of a water point, GPO (power point) and gas point has been made available to the balcony.



This floor plan was produced prior to construction and while the information contained herein is believed to be correct it is not guaranteed. Changes will undoubtedly be made in accordance with the contract for sale. The plan does not show additional features such as hot water systems, services, or Bulkheads necessary for services. Dimensions, areas, and scale of floor plans are approximate only and subject to the terms of the Contract. Areas calculated in accordance with the Strata Schemes Development Act 2015. The furniture and furnishings depicted are not included with any sale. Purchasers must refer to the contract for sale for the list of inclusions. Furnishings should not be taken to indicate the final position of power points, TV connection points and the like. All graphics, including design and extent of tile/paver/carpet areas, landscaping, balustrades, louvres, sun shading devices, privacy screens and services equipment are for illustrative purposes only and are not to be relied on as a representative of the final product. Plans do not show additional features within each lot such as letterboxes and side and rear retaining walls. All level changes in the courtyards may not have been shown.

Stratum Lot  
**1**

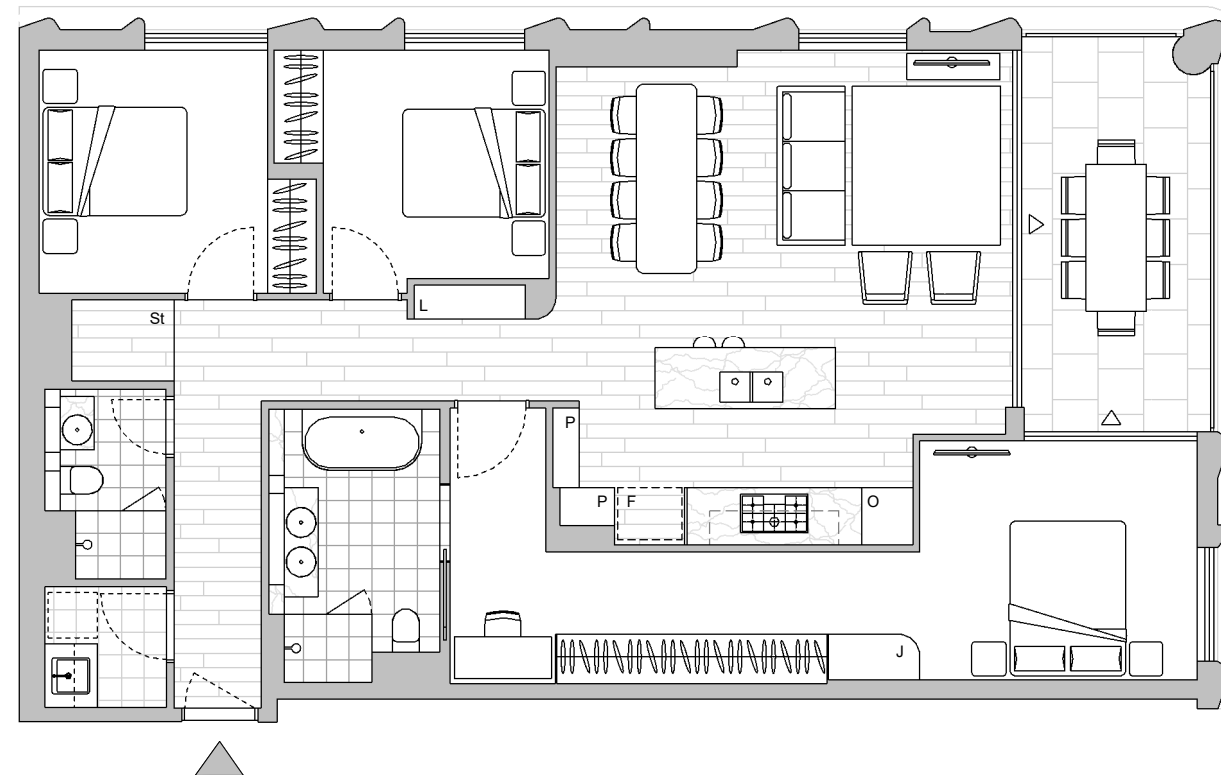
Strata Lot  
**9**

Colour Scheme: Premium B  
Floor Finish: Timber

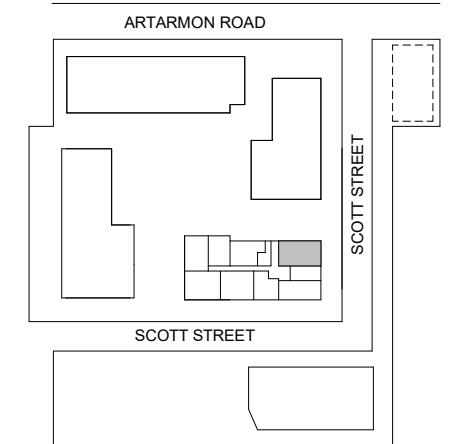
### THREE BEDROOM APARTMENT

Unit Area 114 m<sup>2</sup>  
Balcony Area 12 m<sup>2</sup>  
Total Area 126 m<sup>2</sup>

Areas subject to final survey. Area includes balcony, winter garden and courtyard where applicable. Area excludes associated parking and external storage areas.



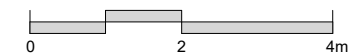
**LEVEL 2**



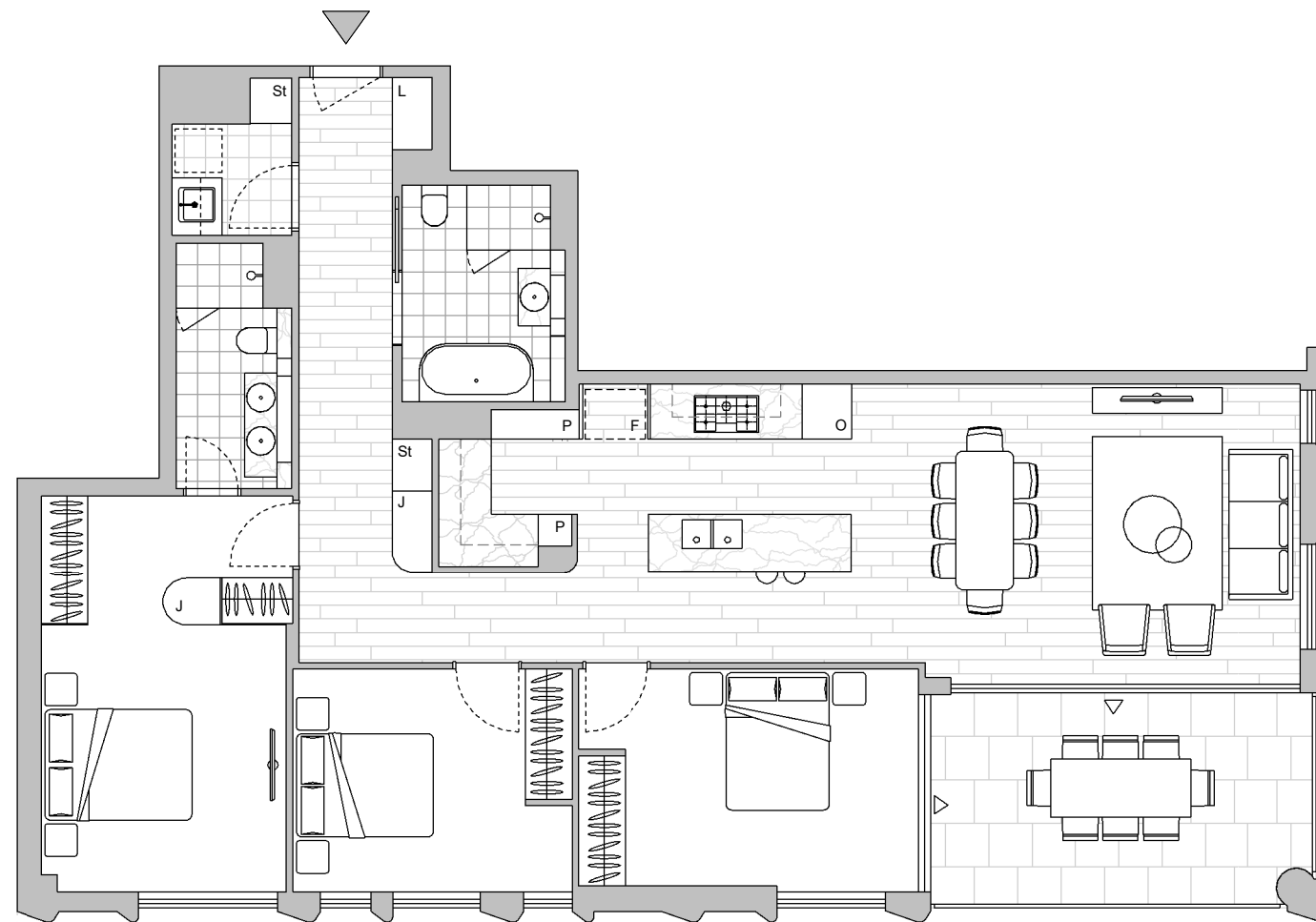
Legend - As Applicable

- |                   |             |            |
|-------------------|-------------|------------|
| ▲ Access          | F Fridge    | J Joinery  |
| △ Balcony Access  | P Pantry    | L Linen    |
| ** Sliding Screen | O Wall Oven | St Storage |
| * Fixed Screen    |             |            |

Provision of a water point, GPO (power point) and gas point has been made available to the balcony.



This floor plan was produced prior to construction and while the information contained herein is believed to be correct it is not guaranteed. Changes will undoubtedly be made in accordance with the contract for sale. The plan does not show additional features such as hot water systems, services, or Bulkheads necessary for services. Dimensions, areas, and scale of floor plans are approximate only and subject to the terms of the Contract. Areas calculated in accordance with the Strata Schemes Development Act 2015. The furniture and furnishings depicted are not included with any sale. Purchasers must refer to the contract for sale for the list of inclusions. Furnishings should not be taken to indicate the final position of power points, TV connection points and the like. All graphics, including design and extent of tile/paver/carpet areas, landscaping, balustrades, louvres, sun shading devices, privacy screens and services equipment are for illustrative purposes only and are not to be relied on as a representative of the final product. Plans do not show additional features within each lot such as letterboxes and side and rear retaining walls. All level changes in the courtyards may not have been shown.



LEVEL 2

Stratum Lot  
1

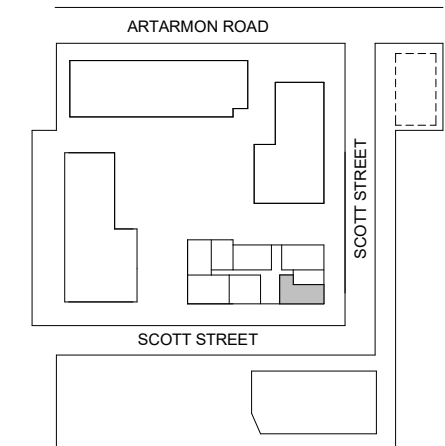
Strata Lot  
11

Colour Scheme: Premium A  
Floor Finish: Timber

**THREE BEDROOM APARTMENT**

Unit Area 123 m<sup>2</sup>  
Balcony Area 14 m<sup>2</sup>  
Total Area 137 m<sup>2</sup>

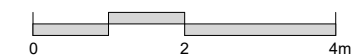
Areas subject to final survey. Area includes balcony, winter garden and courtyard where applicable. Area excludes associated parking and external storage areas.



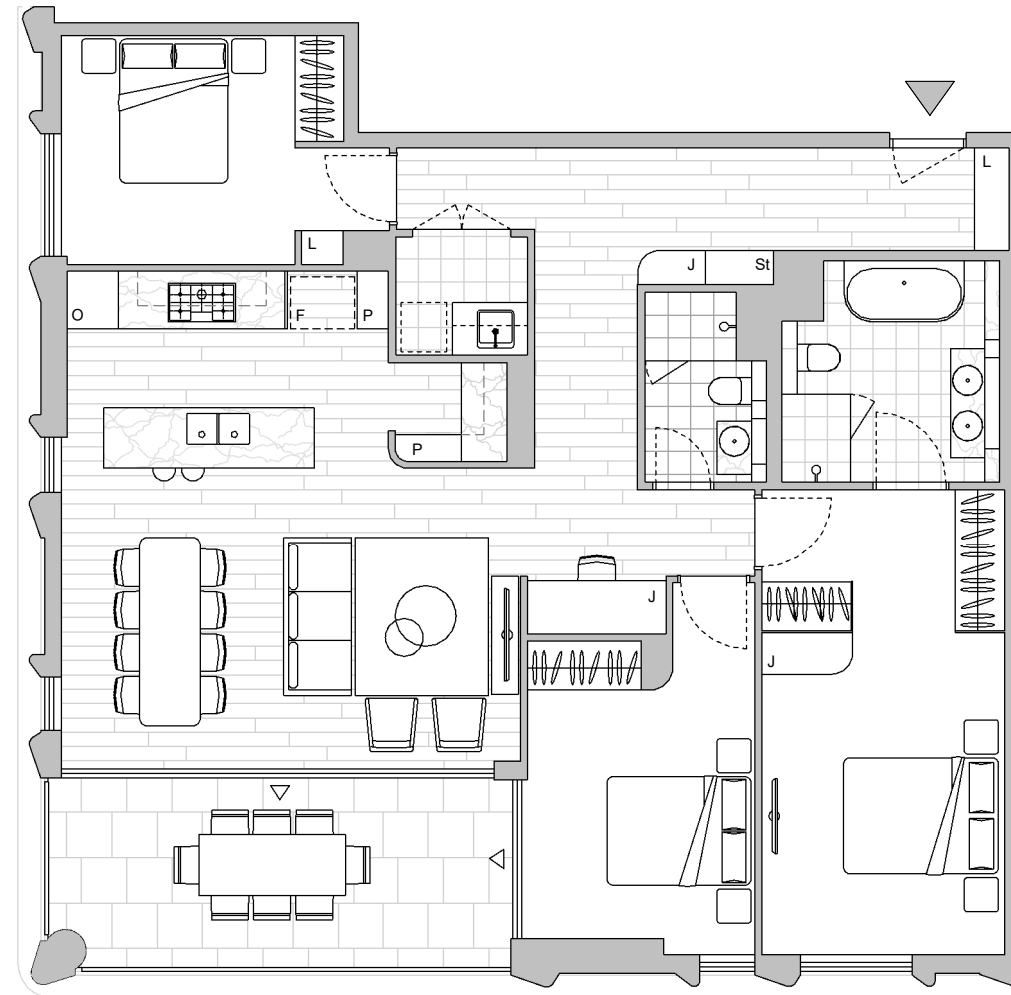
Legend - As Applicable

- |                   |             |            |
|-------------------|-------------|------------|
| ▲ Access          | F Fridge    | J Joinery  |
| △ Balcony Access  | P Pantry    | L Linen    |
| ** Sliding Screen | O Wall Oven | St Storage |
| * Fixed Screen    |             |            |

Provision of a water point, GPO (power point) and gas point has been made available to the balcony.



This floor plan was produced prior to construction and while the information contained herein is believed to be correct it is not guaranteed. Changes will undoubtedly be made in accordance with the contract for sale. The plan does not show additional features such as hot water systems, services, or Bulkheads necessary for services. Dimensions, areas, and scale of floor plans are approximate only and subject to the terms of the Contract. Areas calculated in accordance with the Strata Schemes Development Act 2015. The furniture and furnishings depicted are not included with any sale. Purchasers must refer to the contract for sale for the list of inclusions. Furnishings should not be taken to indicate the final position of power points, TV connection points and the like. All graphics, including design and extent of tile/paver/carpet areas, landscaping, balustrades, louvres, sun shading devices, privacy screens and services equipment are for illustrative purposes only and are not to be relied on as a representative of the final product. Plans do not show additional features within each lot such as letterboxes and side and rear retaining walls. All level changes in the courtyards may not have been shown.



**LEVEL 2**

Stratum Lot  
**1**

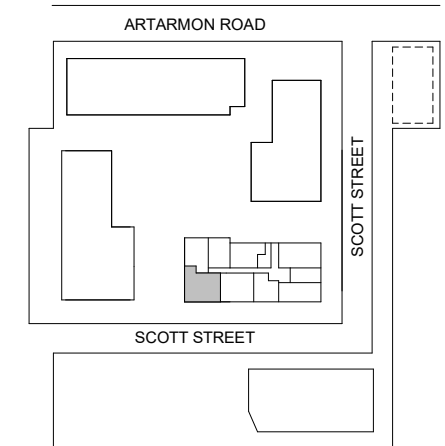
Strata Lot  
**14**

Colour Scheme: Premium B  
Floor Finish: Timber

**THREE BEDROOM + MEDIA APARTMENT**

Unit Area 121 m<sup>2</sup>  
Balcony Area 14 m<sup>2</sup>  
Total Area 135 m<sup>2</sup>

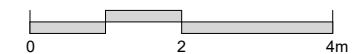
Areas subject to final survey. Area includes balcony, winter garden and courtyard where applicable. Area excludes associated parking and external storage areas.



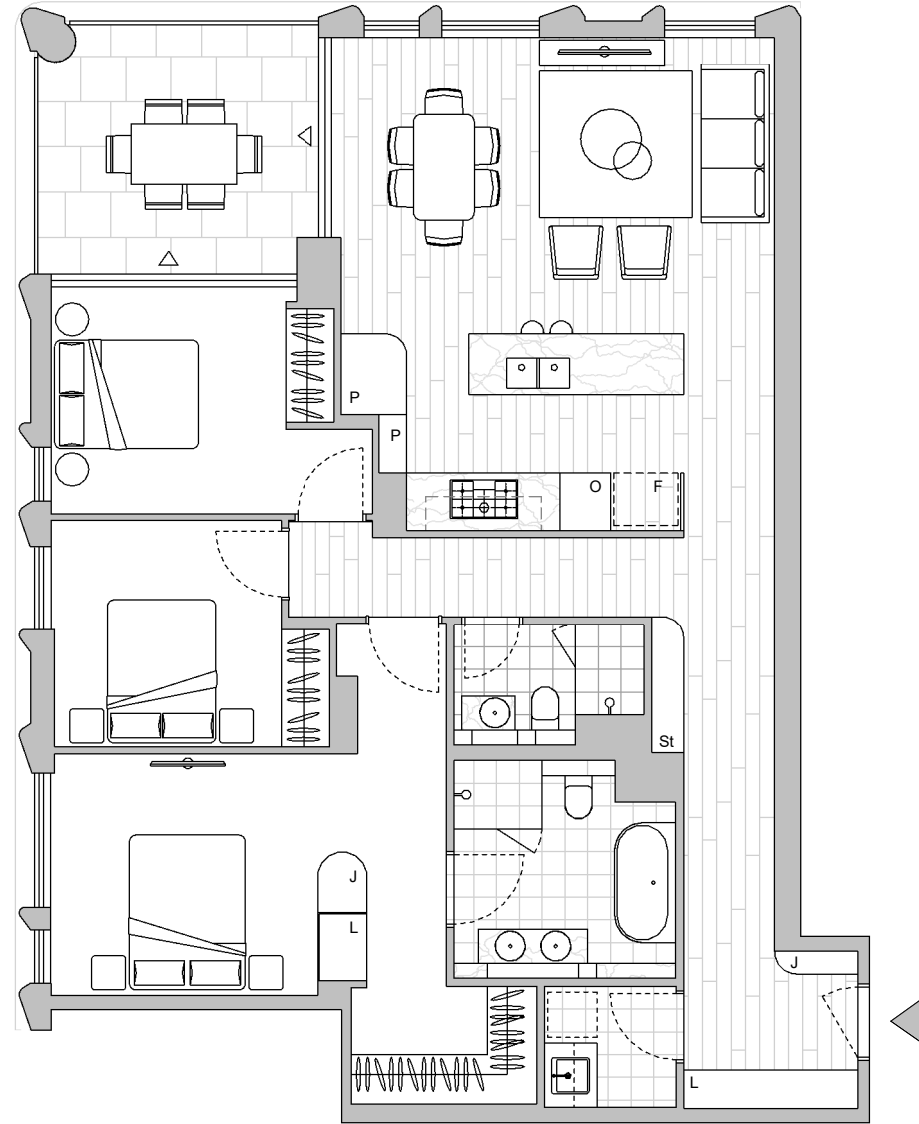
Legend - As Applicable

- |                   |             |            |
|-------------------|-------------|------------|
| ▲ Access          | F Fridge    | J Joinery  |
| △ Balcony Access  | P Pantry    | L Linen    |
| ** Sliding Screen | O Wall Oven | St Storage |
| * Fixed Screen    |             |            |

Provision of a water point, GPO (power point) and gas point has been made available to the balcony.



This floor plan was produced prior to construction and while the information contained herein is believed to be correct it is not guaranteed. Changes will undoubtedly be made in accordance with the contract for sale. The plan does not show additional features such as hot water systems, services, or Bulkheads necessary for services. Dimensions, areas, and scale of floor plans are approximate only and subject to the terms of the Contract. Areas calculated in accordance with the Strata Schemes Development Act 2015. The furniture and furnishings depicted are not included with any sale. Purchasers must refer to the contract for sale for the list of inclusions. Furnishings should not be taken to indicate the final position of power points, TV connection points and the like. All graphics, including design and extent of tile/paver/carpet areas, landscaping, balustrades, louvres, sun shading devices, privacy screens and services equipment are for illustrative purposes only and are not to be relied on as a representative of the final product. Plans do not show additional features within each lot such as letterboxes and side and rear retaining walls. All level changes in the courtyards may not have been shown.



LEVEL 2

Stratum Lot  
1

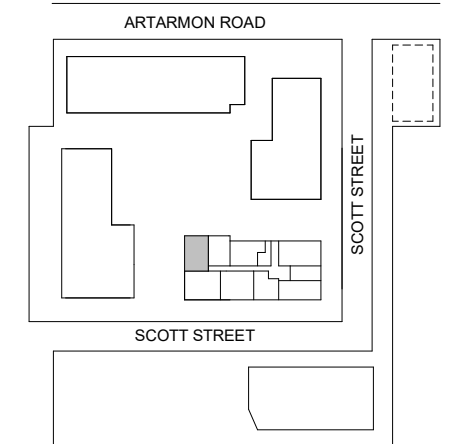
Strata Lot  
15

Colour Scheme: Premium C  
Floor Finish: Timber

**THREE BEDROOM APARTMENT**

Unit Area 117 m<sup>2</sup>  
Balcony Area 12 m<sup>2</sup>  
Total Area 129 m<sup>2</sup>

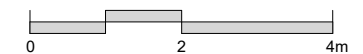
Areas subject to final survey. Area includes balcony, winter garden and courtyard where applicable. Area excludes associated parking and external storage areas.



Legend - As Applicable

- |                   |             |            |
|-------------------|-------------|------------|
| ▲ Access          | F Fridge    | J Joinery  |
| △ Balcony Access  | P Pantry    | L Linen    |
| ** Sliding Screen | O Wall Oven | St Storage |
| * Fixed Screen    |             |            |

Provision of a water point, GPO (power point) and gas point has been made available to the balcony.



This floor plan was produced prior to construction and while the information contained herein is believed to be correct it is not guaranteed. Changes will undoubtedly be made in accordance with the contract for sale. The plan does not show additional features such as hot water systems, services, or Bulkheads necessary for services. Dimensions, areas, and scale of floor plans are approximate only and subject to the terms of the Contract. Areas calculated in accordance with the Strata Schemes Development Act 2015. The furniture and furnishings depicted are not included with any sale. Purchasers must refer to the contract for sale for the list of inclusions. Furnishings should not be taken to indicate the final position of power points, TV connection points and the like. All graphics, including design and extent of tile/paver/carpet areas, landscaping, balustrades, louvres, sun shading devices, privacy screens and services equipment are for illustrative purposes only and are not to be relied on as a representative of the final product. Plans do not show additional features within each lot such as letterboxes and side and rear retaining walls. All level changes in the courtyards may not have been shown.



Stratum Lot  
**1**

Strata Lot  
**18**

Colour Scheme: Premium C  
Floor Finish: Timber

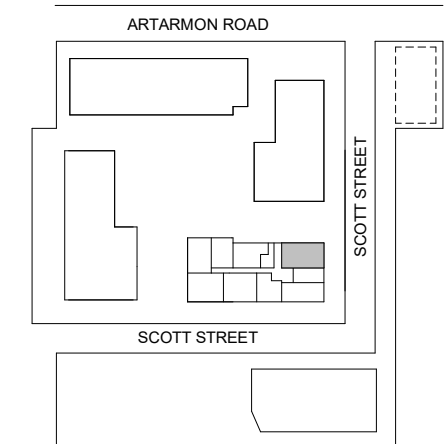
**THREE BEDROOM APARTMENT**

Unit Area 114 m<sup>2</sup>  
Balcony Area 12 m<sup>2</sup>  
Total Area 126 m<sup>2</sup>

Areas subject to final survey. Area includes balcony, winter garden and courtyard where applicable. Area excludes associated parking and external storage areas.



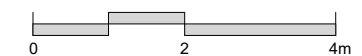
**LEVEL 3**



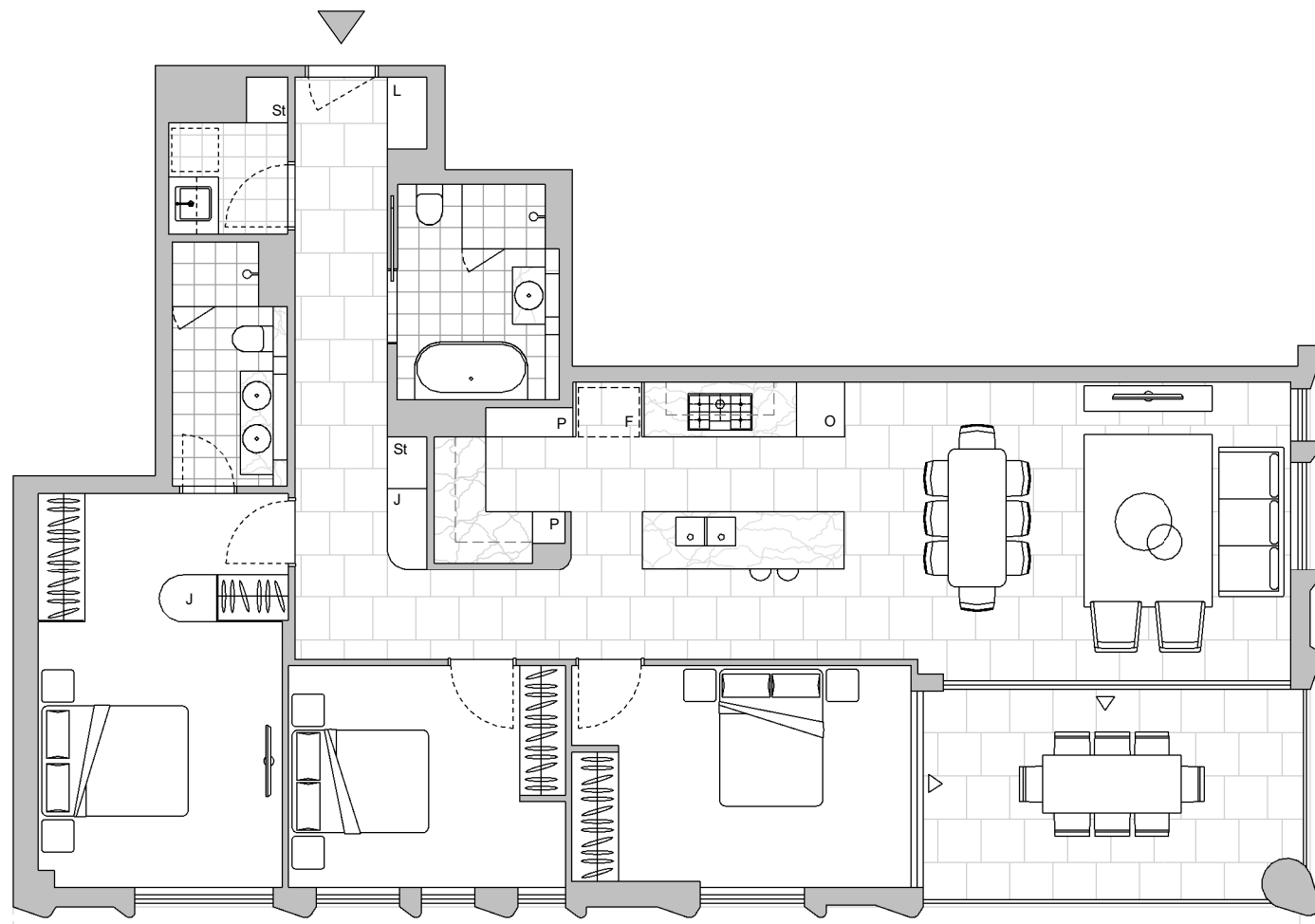
Legend - As Applicable

- |                   |             |            |
|-------------------|-------------|------------|
| ▲ Access          | F Fridge    | J Joinery  |
| △ Balcony Access  | P Pantry    | L Linen    |
| ** Sliding Screen | O Wall Oven | St Storage |
| * Fixed Screen    |             |            |

Provision of a water point, GPO (power point) and gas point has been made available to the balcony.



This floor plan was produced prior to construction and while the information contained herein is believed to be correct it is not guaranteed. Changes will undoubtedly be made in accordance with the contract for sale. The plan does not show additional features such as hot water systems, services, or Bulkheads necessary for services. Dimensions, areas, and scale of floor plans are approximate only and subject to the terms of the Contract. Areas calculated in accordance with the Strata Schemes Development Act 2015. The furniture and furnishings depicted are not included with any sale. Purchasers must refer to the contract for sale for the list of inclusions. Furnishings should not be taken to indicate the final position of power points, TV connection points and the like. All graphics, including design and extent of tile/paver/carpet areas, landscaping, balustrades, louvres, sun shading devices, privacy screens and services equipment are for illustrative purposes only and are not to be relied on as a representative of the final product. Plans do not show additional features within each lot such as letterboxes and side and rear retaining walls. All level changes in the courtyards may not have been shown.



LEVEL 3

Stratum Lot  
1

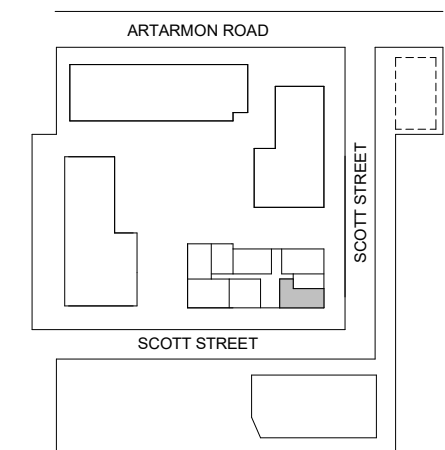
Strata Lot  
20

Colour Scheme: Premium B  
Floor Finish: Tiles

**THREE BEDROOM APARTMENT**

Unit Area 123 m<sup>2</sup>  
Balcony Area 14 m<sup>2</sup>  
Total Area 137 m<sup>2</sup>

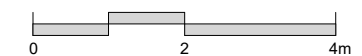
Areas subject to final survey. Area includes balcony, winter garden and courtyard where applicable. Area excludes associated parking and external storage areas.



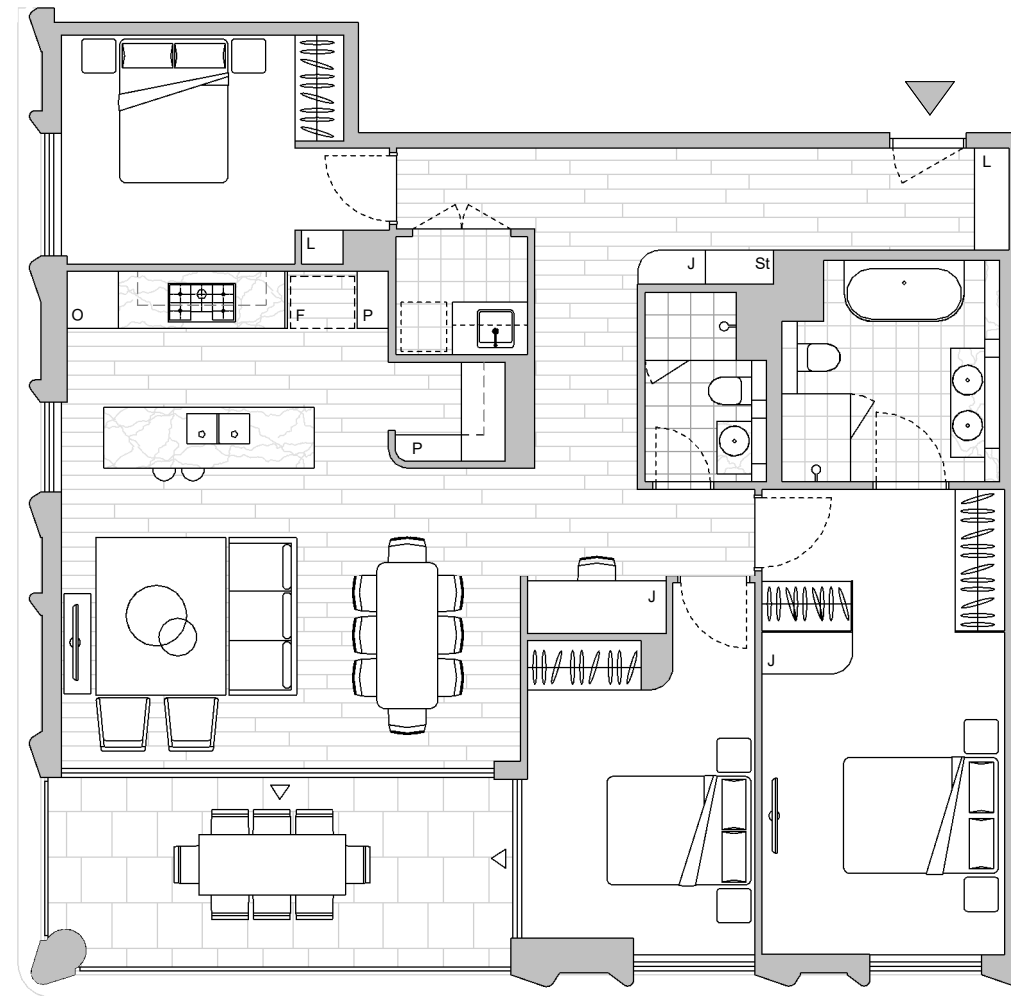
Legend - As Applicable

- |                   |             |            |
|-------------------|-------------|------------|
| ▲ Access          | F Fridge    | J Joinery  |
| △ Balcony Access  | P Pantry    | L Linen    |
| ** Sliding Screen | O Wall Oven | St Storage |
| * Fixed Screen    |             |            |

Provision of a water point, GPO (power point) and gas point has been made available to the balcony.



This floor plan was produced prior to construction and while the information contained herein is believed to be correct it is not guaranteed. Changes will undoubtedly be made in accordance with the contract for sale. The plan does not show additional features such as hot water systems, services, or Bulkheads necessary for services. Dimensions, areas, and scale of floor plans are approximate only and subject to the terms of the Contract. Areas calculated in accordance with the Strata Schemes Development Act 2015. The furniture and furnishings depicted are not included with any sale. Purchasers must refer to the contract for sale for the list of inclusions. Furnishings should not be taken to indicate the final position of power points, TV connection points and the like. All graphics, including design and extent of tile/paver/carpet areas, landscaping, balustrades, louvres, sun shading devices, privacy screens and services equipment are for illustrative purposes only and are not to be relied on as a representative of the final product. Plans do not show additional features within each lot such as letterboxes and side and rear retaining walls. All level changes in the courtyards may not have been shown.



**LEVEL 3**

Stratum Lot  
**1**

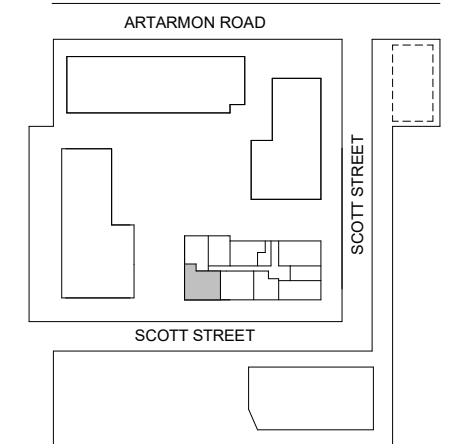
Strata Lot  
**23**

Colour Scheme: Premium A  
Floor Finish: Timber

**THREE BEDROOM + MEDIA APARTMENT**

Unit Area 120 m<sup>2</sup>  
Balcony Area 15 m<sup>2</sup>  
Total Area 135 m<sup>2</sup>

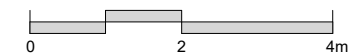
Areas subject to final survey. Area includes balcony, winter garden and courtyard where applicable. Area excludes associated parking and external storage areas.



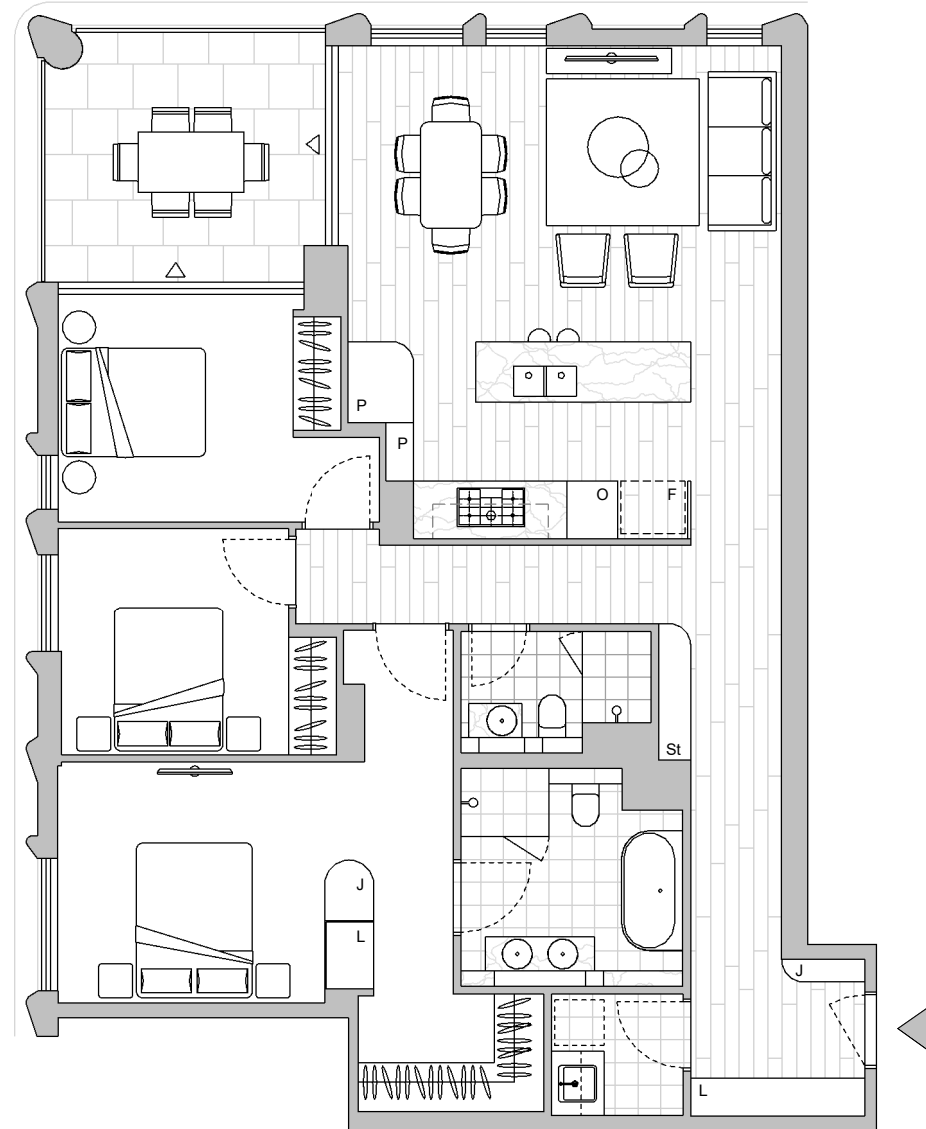
Legend - As Applicable

- |                   |             |            |
|-------------------|-------------|------------|
| ▲ Access          | F Fridge    | J Joinery  |
| △ Balcony Access  | P Pantry    | L Linen    |
| ** Sliding Screen | O Wall Oven | St Storage |
| * Fixed Screen    |             |            |

Provision of a water point, GPO (power point) and gas point has been made available to the balcony.



This floor plan was produced prior to construction and while the information contained herein is believed to be correct it is not guaranteed. Changes will undoubtedly be made in accordance with the contract for sale. The plan does not show additional features such as hot water systems, services, or Bulkheads necessary for services. Dimensions, areas, and scale of floor plans are approximate only and subject to the terms of the Contract. Areas calculated in accordance with the Strata Schemes Development Act 2015. The furniture and furnishings depicted are not included with any sale. Purchasers must refer to the contract for sale for the list of inclusions. Furnishings should not be taken to indicate the final position of power points, TV connection points and the like. All graphics, including design and extent of tile/paver/carpet areas, landscaping, balustrades, louvres, sun shading devices, privacy screens and services equipment are for illustrative purposes only and are not to be relied on as a representative of the final product. Plans do not show additional features within each lot such as letterboxes and side and rear retaining walls. All level changes in the courtyards may not have been shown.



**LEVEL 3**

Stratum Lot  
**1**

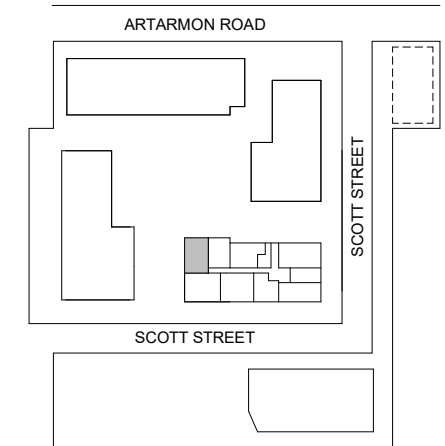
Strata Lot  
**24**

Colour Scheme: Premium A  
Floor Finish: Timber

**THREE BEDROOM APARTMENT**

Unit Area 117 m<sup>2</sup>  
Balcony Area 12 m<sup>2</sup>  
Total Area 129 m<sup>2</sup>

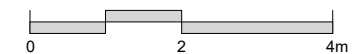
Areas subject to final survey. Area includes balcony, winter garden and courtyard where applicable. Area excludes associated parking and external storage areas.



Legend - As Applicable

- |                   |             |            |
|-------------------|-------------|------------|
| ▲ Access          | F Fridge    | J Joinery  |
| △ Balcony Access  | P Pantry    | L Linen    |
| ** Sliding Screen | O Wall Oven | St Storage |
| * Fixed Screen    |             |            |

Provision of a water point, GPO (power point) and gas point has been made available to the balcony.



This floor plan was produced prior to construction and while the information contained herein is believed to be correct it is not guaranteed. Changes will undoubtedly be made in accordance with the contract for sale. The plan does not show additional features such as hot water systems, services, or Bulkheads necessary for services. Dimensions, areas, and scale of floor plans are approximate only and subject to the terms of the Contract. Areas calculated in accordance with the Strata Schemes Development Act 2015. The furniture and furnishings depicted are not included with any sale. Purchasers must refer to the contract for sale for the list of inclusions. Furnishings should not be taken to indicate the final position of power points, TV connection points and the like. All graphics, including design and extent of tile/paver/carpet areas, landscaping, balustrades, louvres, sun shading devices, privacy screens and services equipment are for illustrative purposes only and are not to be relied on as a representative of the final product. Plans do not show additional features within each lot such as letterboxes and side and rear retaining walls. All level changes in the courtyards may not have been shown.

Stratum Lot  
**1**

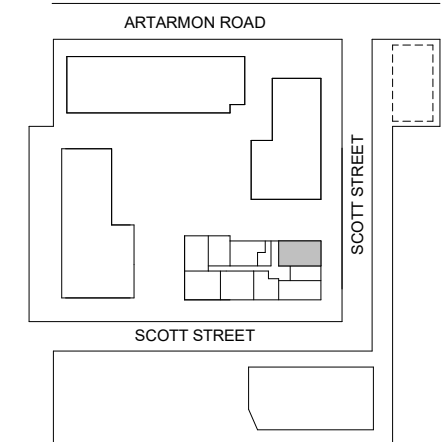
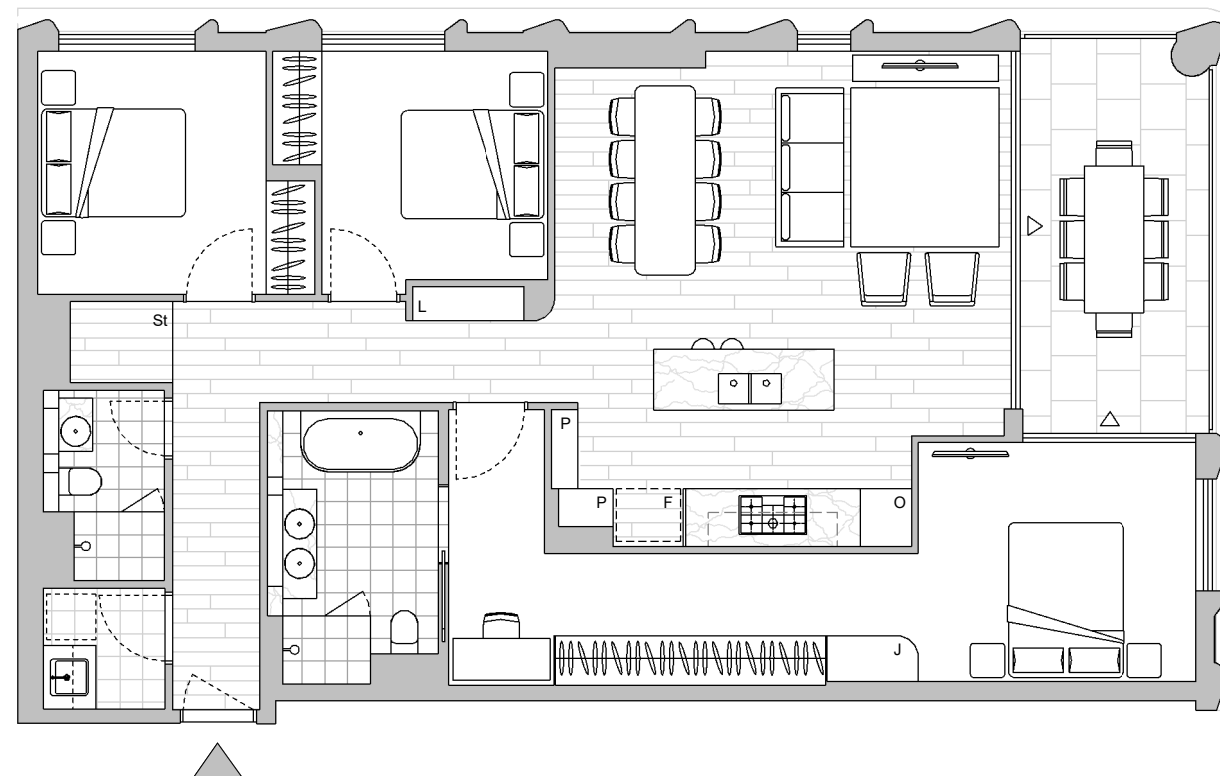
Strata Lot  
**27**

Colour Scheme: Premium A  
Floor Finish: Timber

**THREE BEDROOM APARTMENT**

Unit Area 114 m<sup>2</sup>  
Balcony Area 12 m<sup>2</sup>  
Total Area 126 m<sup>2</sup>

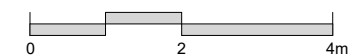
Areas subject to final survey. Area includes balcony, winter garden and courtyard where applicable. Area excludes associated parking and external storage areas.



Legend - As Applicable

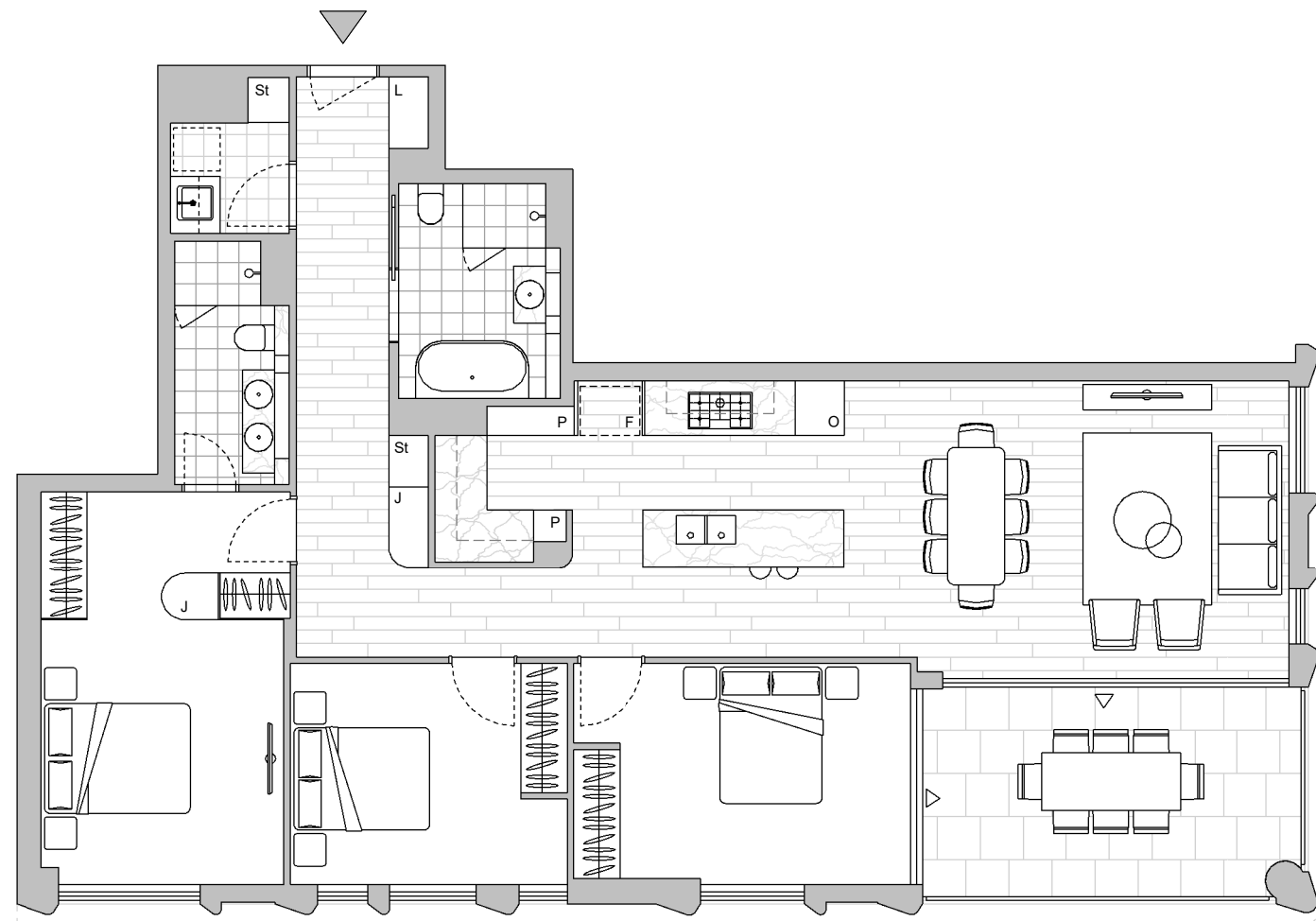
- |                   |             |            |
|-------------------|-------------|------------|
| ▲ Access          | F Fridge    | J Joinery  |
| △ Balcony Access  | P Pantry    | L Linen    |
| ** Sliding Screen | O Wall Oven | St Storage |
| * Fixed Screen    |             |            |

Provision of a water point, GPO (power point) and gas point has been made available to the balcony.



**LEVEL 4**

This floor plan was produced prior to construction and while the information contained herein is believed to be correct it is not guaranteed. Changes will undoubtedly be made in accordance with the contract for sale. The plan does not show additional features such as hot water systems, services, or Bulkheads necessary for services. Dimensions, areas, and scale of floor plans are approximate only and subject to the terms of the Contract. Areas calculated in accordance with the Strata Schemes Development Act 2015. The furniture and furnishings depicted are not included with any sale. Purchasers must refer to the contract for sale for the list of inclusions. Furnishings should not be taken to indicate the final position of power points, TV connection points and the like. All graphics, including design and extent of tile/paver/carpet areas, landscaping, balustrades, louvres, sun shading devices, privacy screens and services equipment are for illustrative purposes only and are not to be relied on as a representative of the final product. Plans do not show additional features within each lot such as letterboxes and side and rear retaining walls. All level changes in the courtyards may not have been shown.



LEVEL 4

Stratum Lot  
1

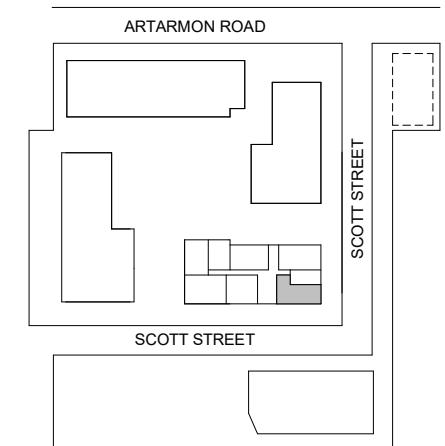
Strata Lot  
29

Colour Scheme: Premium C  
Floor Finish: Timber

### THREE BEDROOM APARTMENT

Unit Area 123 m<sup>2</sup>  
Balcony Area 14 m<sup>2</sup>  
Total Area 137 m<sup>2</sup>

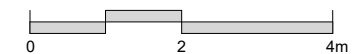
Areas subject to final survey. Area includes balcony, winter garden and courtyard where applicable. Area excludes associated parking and external storage areas.



Legend - As Applicable

▲ Access	F Fridge	J Joinery
△ Balcony Access	P Pantry	L Linen
** Sliding Screen	O Wall Oven	St Storage
* Fixed Screen		

Provision of a water point, GPO (power point) and gas point has been made available to the balcony.



This floor plan was produced prior to construction and while the information contained herein is believed to be correct it is not guaranteed. Changes will undoubtedly be made in accordance with the contract for sale. The plan does not show additional features such as hot water systems, services, or Bulkheads necessary for services. Dimensions, areas, and scale of floor plans are approximate only and subject to the terms of the Contract. Areas calculated in accordance with the Strata Schemes Development Act 2015. The furniture and furnishings depicted are not included with any sale. Purchasers must refer to the contract for sale for the list of inclusions. Furnishings should not be taken to indicate the final position of power points, TV connection points and the like. All graphics, including design and extent of tile/paver/carpet areas, landscaping, balustrades, louvres, sun shading devices, privacy screens and services equipment are for illustrative purposes only and are not to be relied on as a representative of the final product. Plans do not show additional features within each lot such as letterboxes and side and rear retaining walls. All level changes in the courtyards may not have been shown.



LEVEL 4

Stratum Lot  
1

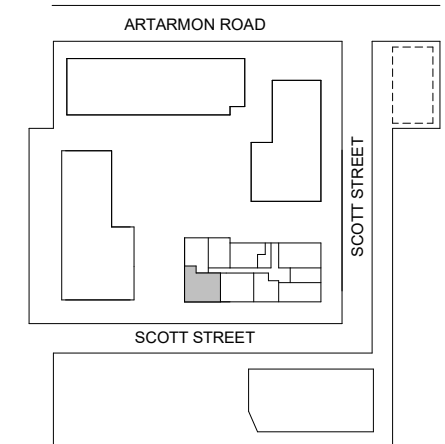
Strata Lot  
32

Colour Scheme: Premium A  
Floor Finish: Timber

**THREE BEDROOM + MEDIA APARTMENT**

Unit Area 120 m<sup>2</sup>  
Balcony Area 15 m<sup>2</sup>  
Total Area 135 m<sup>2</sup>

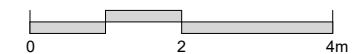
Areas subject to final survey. Area includes balcony, winter garden and courtyard where applicable. Area excludes associated parking and external storage areas.



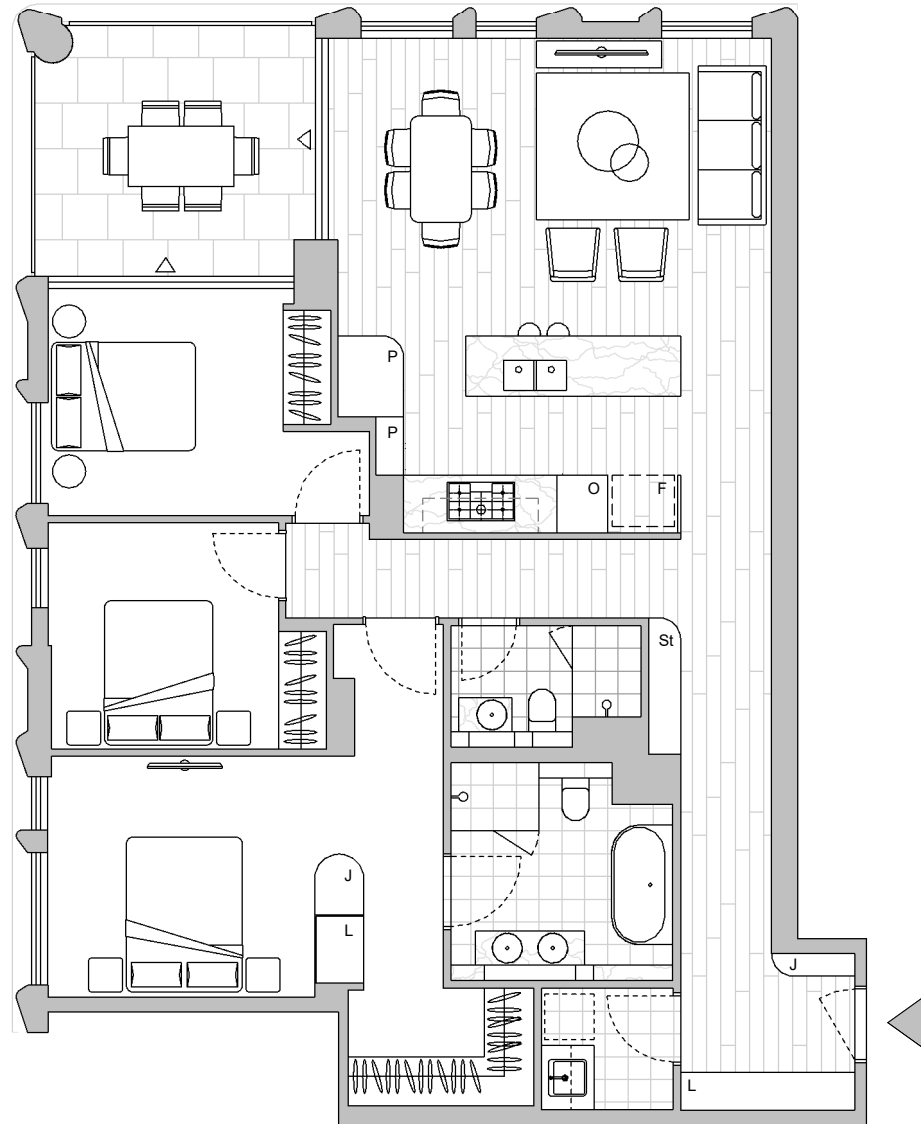
Legend - As Applicable

- |                   |             |            |
|-------------------|-------------|------------|
| ▲ Access          | F Fridge    | J Joinery  |
| △ Balcony Access  | P Pantry    | L Linen    |
| ** Sliding Screen | O Wall Oven | St Storage |
| * Fixed Screen    |             |            |

Provision of a water point, GPO (power point) and gas point has been made available to the balcony.



This floor plan was produced prior to construction and while the information contained herein is believed to be correct it is not guaranteed. Changes will undoubtedly be made in accordance with the contract for sale. The plan does not show additional features such as hot water systems, services, or Bulkheads necessary for services. Dimensions, areas, and scale of floor plans are approximate only and subject to the terms of the Contract. Areas calculated in accordance with the Strata Schemes Development Act 2015. The furniture and furnishings depicted are not included with any sale. Purchasers must refer to the contract for sale for the list of inclusions. Furnishings should not be taken to indicate the final position of power points, TV connection points and the like. All graphics, including design and extent of tile/paver/carpet areas, landscaping, balustrades, louvres, sun shading devices, privacy screens and services equipment are for illustrative purposes only and are not to be relied on as a representative of the final product. Plans do not show additional features within each lot such as letterboxes and side and rear retaining walls. All level changes in the courtyards may not have been shown.



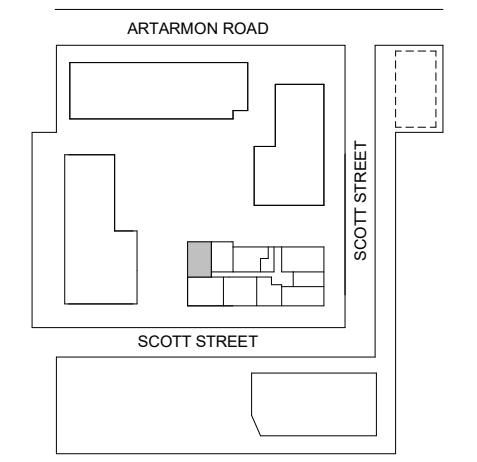
**LEVEL 4**

Stratum Lot **1**  
 Colour Scheme: Premium B  
 Floor Finish: Timber

Strata Lot **33**

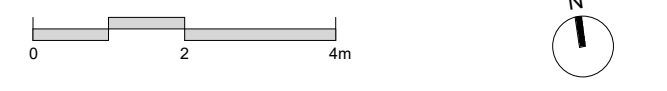
**THREE BEDROOM APARTMENT**  
 Unit Area 117 m<sup>2</sup>  
 Balcony Area 12 m<sup>2</sup>  
 Total Area 129 m<sup>2</sup>

Areas subject to final survey. Area includes balcony, winter garden and courtyard where applicable. Area excludes associated parking and external storage areas.



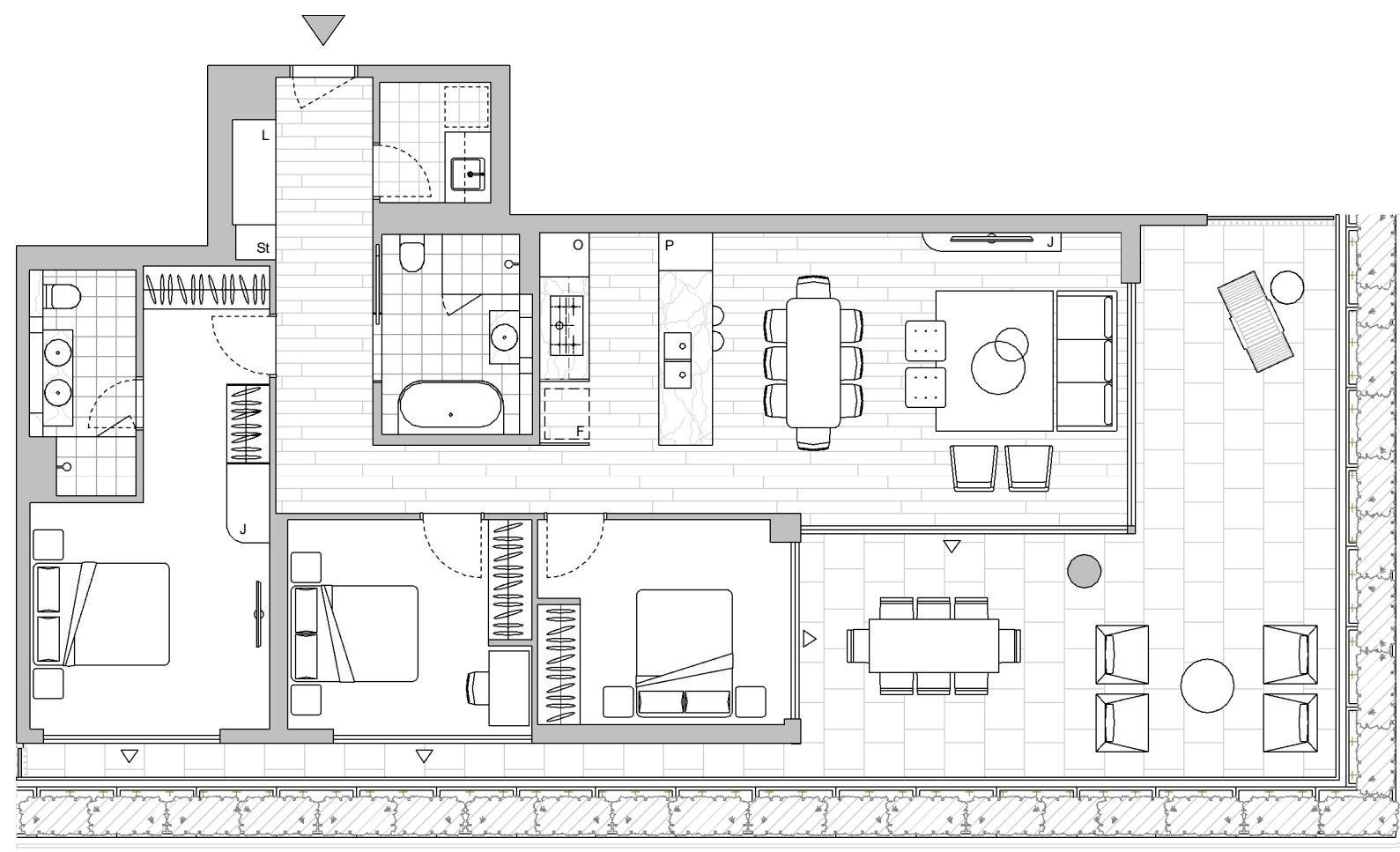
- Legend - As Applicable
- |                   |             |            |
|-------------------|-------------|------------|
| ▲ Access          | F Fridge    | J Joinery  |
| △ Balcony Access  | P Pantry    | L Linen    |
| ** Sliding Screen | O Wall Oven | St Storage |
| * Fixed Screen    |             |            |

Provision of a water point, GPO (power point) and gas point has been made available to the balcony.



This floor plan was produced prior to construction and while the information contained herein is believed to be correct it is not guaranteed. Changes will undoubtedly be made in accordance with the contract for sale. The plan does not show additional features such as hot water systems, services, or Bulkheads necessary for services. Dimensions, areas, and scale of floor plans are approximate only and subject to the terms of the Contract. Areas calculated in accordance with the Strata Schemes Development Act 2015. The furniture and furnishings depicted are not included with any sale. Purchasers must refer to the contract for sale for the list of inclusions. Furnishings should not be taken to indicate the final position of power points, TV connection points and the like. All graphics, including design and extent of tile/paver/carpet areas, landscaping, balustrades, louvres, sun shading devices, privacy screens and services equipment are for illustrative purposes only and are not to be relied on as a representative of the final product. Plans do not show additional features within each lot such as letterboxes and side and rear retaining walls. All level changes in the courtyards may not have been shown.





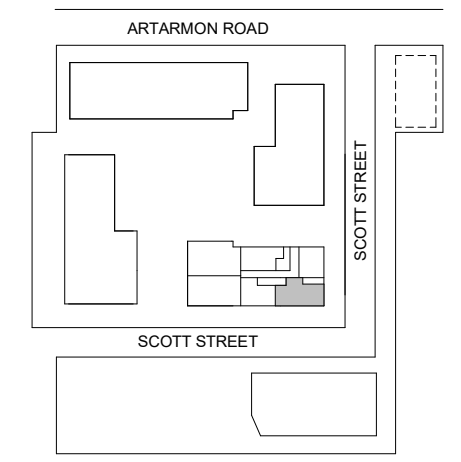
LEVEL 5

Stratum Lot 1  
 Colour Scheme: Premium B  
 Floor Finish: Timber

Strata Lot 37

**THREE BEDROOM APARTMENT**  
 Unit Area 113 m<sup>2</sup>  
 Balcony Area 49 m<sup>2</sup>  
 Total Area 162 m<sup>2</sup>

Areas subject to final survey. Area includes balcony, winter garden and courtyard where applicable. Area excludes associated parking and external storage areas.



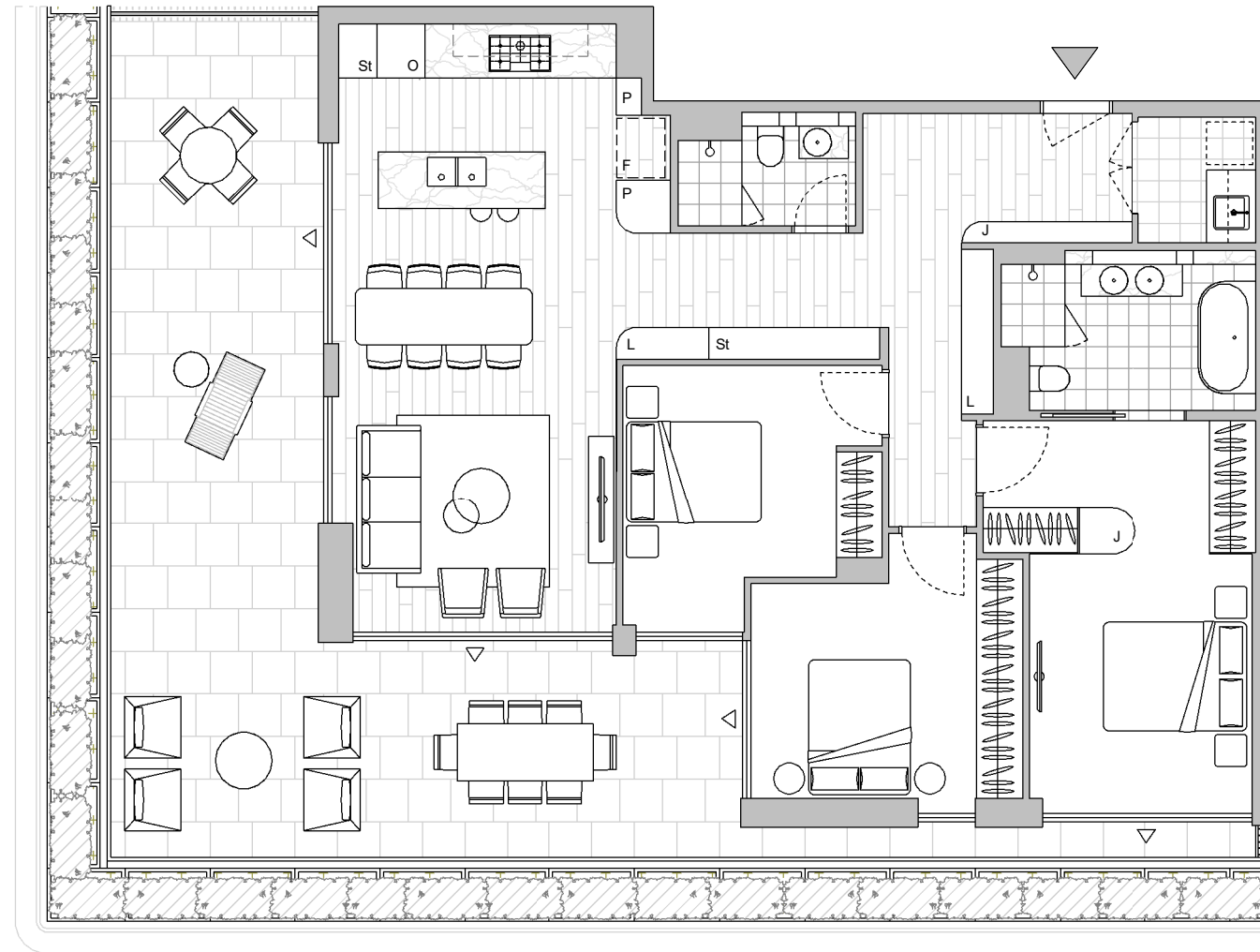
- Legend - As Applicable
- ▲ Access
  - △ Balcony Access
  - \*\* Sliding Screen
  - \* Fixed Screen
  - F Fridge
  - P Pantry
  - O Wall Oven
  - J Joinery
  - L Linen
  - St Storage
  - Planting maintained by OC

Provision of a water point, GPO (power point) and gas point has been made available to the balcony.

0 2 4m

N

This floor plan was produced prior to construction and while the information contained herein is believed to be correct it is not guaranteed. Changes will undoubtedly be made in accordance with the contract for sale. The plan does not show additional features such as hot water systems, services, or Bulkheads necessary for services. Dimensions, areas, and scale of floor plans are approximate only and subject to the terms of the Contract. Areas calculated in accordance with the Strata Schemes Development Act 2015. The furniture and furnishings depicted are not included with any sale. Purchasers must refer to the contract for sale for the list of inclusions. Furnishings should not be taken to indicate the final position of power points, TV connection points and the like. All graphics, including design and extent of tile/paver/carpet areas, landscaping, balustrades, louvres, sun shading devices, privacy screens and services equipment are for illustrative purposes only and are not to be relied on as a representative of the final product. Plans do not show additional features within each lot such as letterboxes and side and rear retaining walls. All level changes in the courtyards may not have been shown.



LEVEL 5

Stratum Lot  
1

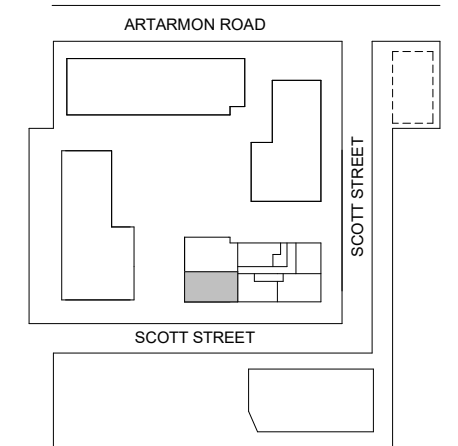
Strata Lot  
39

Colour Scheme: Premium A  
Floor Finish: Timber

**THREE BEDROOM APARTMENT**

Unit Area 116 m<sup>2</sup>  
Balcony Area 57 m<sup>2</sup>  
Total Area 173 m<sup>2</sup>

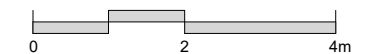
Areas subject to final survey. Area includes balcony, winter garden and courtyard where applicable. Area excludes associated parking and external storage areas.



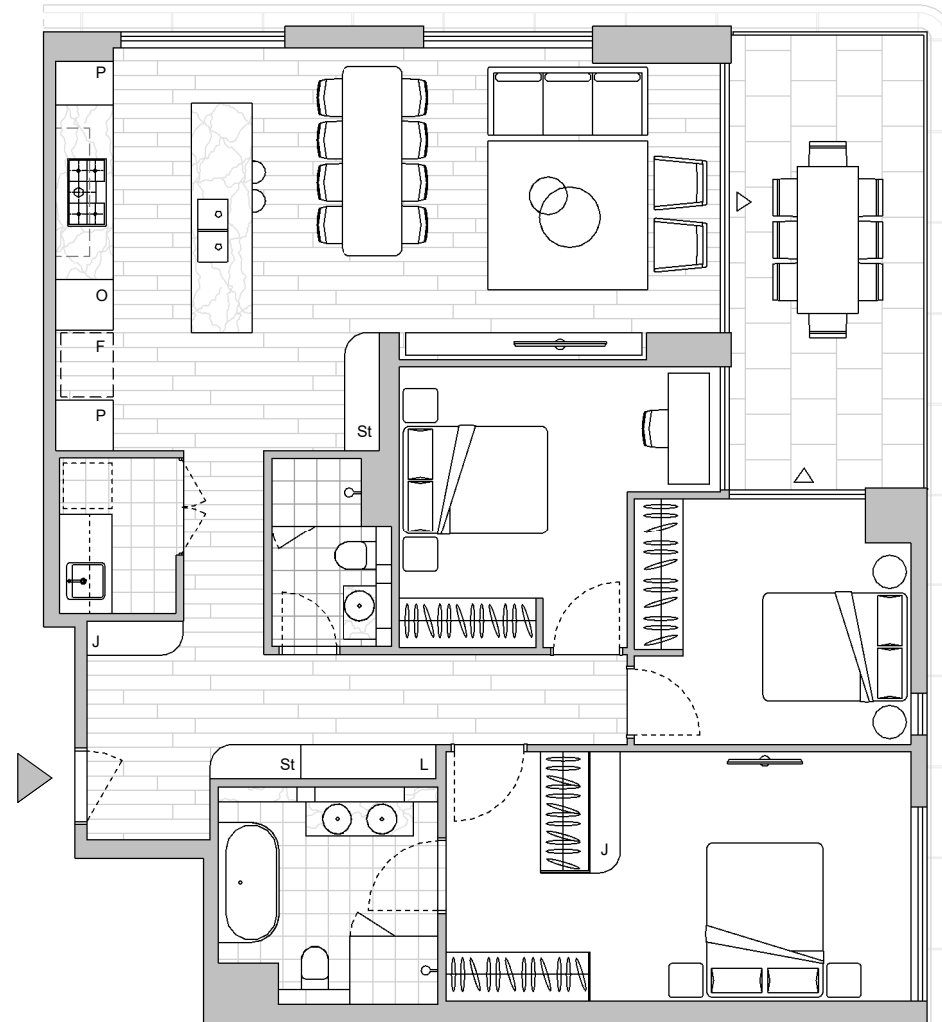
Legend - As Applicable

- |                   |                           |            |
|-------------------|---------------------------|------------|
| ▲ Access          | F Fridge                  | J Joinery  |
| △ Balcony Access  | P Pantry                  | L Linen    |
| ** Sliding Screen | O Wall Oven               | St Storage |
| * Fixed Screen    | Planting maintained by OC |            |

Provision of a water point, GPO (power point) and gas point has been made available to the balcony.



This floor plan was produced prior to construction and while the information contained herein is believed to be correct it is not guaranteed. Changes will undoubtedly be made in accordance with the contract for sale. The plan does not show additional features such as hot water systems, services, or Bulkheads necessary for services. Dimensions, areas, and scale of floor plans are approximate only and subject to the terms of the Contract. Areas calculated in accordance with the Strata Schemes Development Act 2015. The furniture and furnishings depicted are not included with any sale. Purchasers must refer to the contract for sale for the list of inclusions. Furnishings should not be taken to indicate the final position of power points, TV connection points and the like. All graphics, including design and extent of tile/paver/carpet areas, landscaping, balustrades, louvres, sun shading devices, privacy screens and services equipment are for illustrative purposes only and are not to be relied on as a representative of the final product. Plans do not show additional features within each lot such as letterboxes and side and rear retaining walls. All level changes in the courtyards may not have been shown.



LEVEL 6

Stratum Lot  
**1**

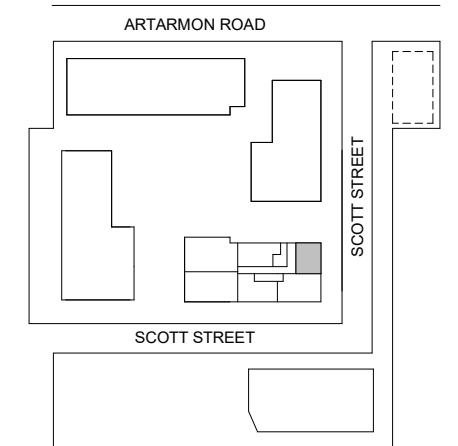
Strata Lot  
**42**

Colour Scheme: Premium C  
Floor Finish: Timber

### THREE BEDROOM APARTMENT

Unit Area 120 m<sup>2</sup>  
Balcony Area 14 m<sup>2</sup>  
Total Area 134 m<sup>2</sup>

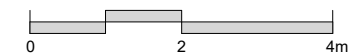
Areas subject to final survey. Area includes balcony, winter garden and courtyard where applicable. Area excludes associated parking and external storage areas.



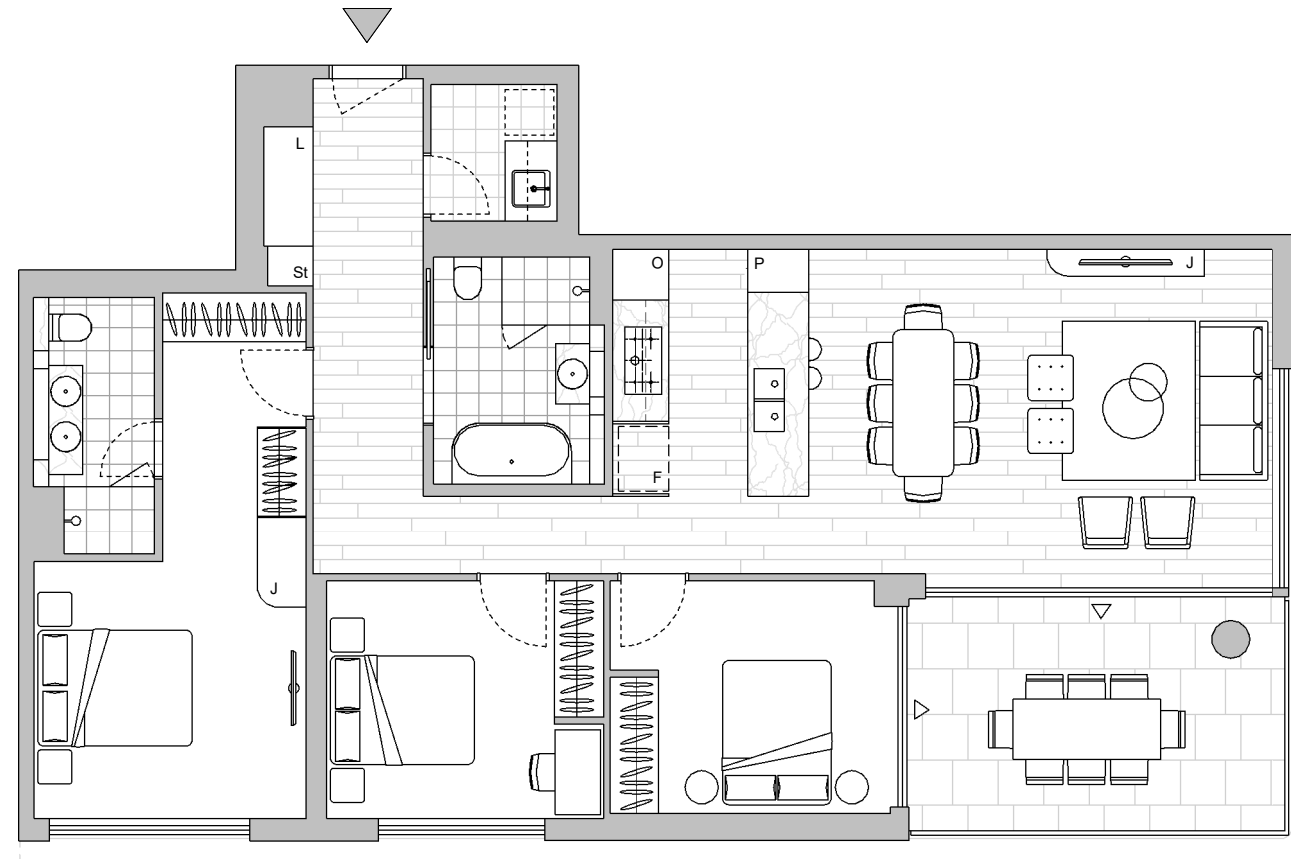
Legend - As Applicable

- |                   |             |            |
|-------------------|-------------|------------|
| ▲ Access          | F Fridge    | J Joinery  |
| △ Balcony Access  | P Pantry    | L Linen    |
| ** Sliding Screen | O Wall Oven | St Storage |
| * Fixed Screen    |             |            |

Provision of a water point, GPO (power point) and gas point has been made available to the balcony.



This floor plan was produced prior to construction and while the information contained herein is believed to be correct it is not guaranteed. Changes will undoubtedly be made in accordance with the contract for sale. The plan does not show additional features such as hot water systems, services, or Bulkheads necessary for services. Dimensions, areas, and scale of floor plans are approximate only and subject to the terms of the Contract. Areas calculated in accordance with the Strata Schemes Development Act 2015. The furniture and furnishings depicted are not included with any sale. Purchasers must refer to the contract for sale for the list of inclusions. Furnishings should not be taken to indicate the final position of power points, TV connection points and the like. All graphics, including design and extent of tile/paver/carpet areas, landscaping, balustrades, louvres, sun shading devices, privacy screens and services equipment are for illustrative purposes only and are not to be relied on as a representative of the final product. Plans do not show additional features within each lot such as letterboxes and side and rear retaining walls. All level changes in the courtyards may not have been shown.



LEVEL 6

Stratum Lot  
1

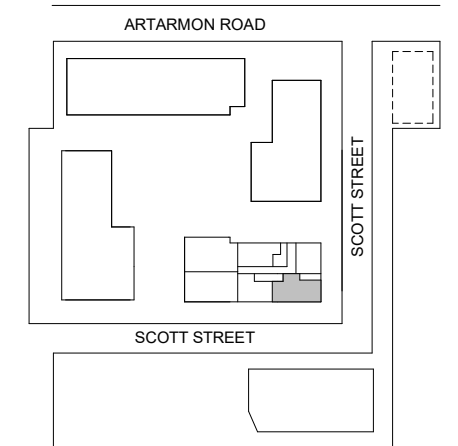
Strata Lot  
43

Colour Scheme: Premium A  
Floor Finish: Timber

### THREE BEDROOM APARTMENT

Unit Area 113 m<sup>2</sup>  
Balcony Area 14 m<sup>2</sup>  
Total Area 127 m<sup>2</sup>

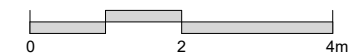
Areas subject to final survey. Area includes balcony, winter garden and courtyard where applicable. Area excludes associated parking and external storage areas.



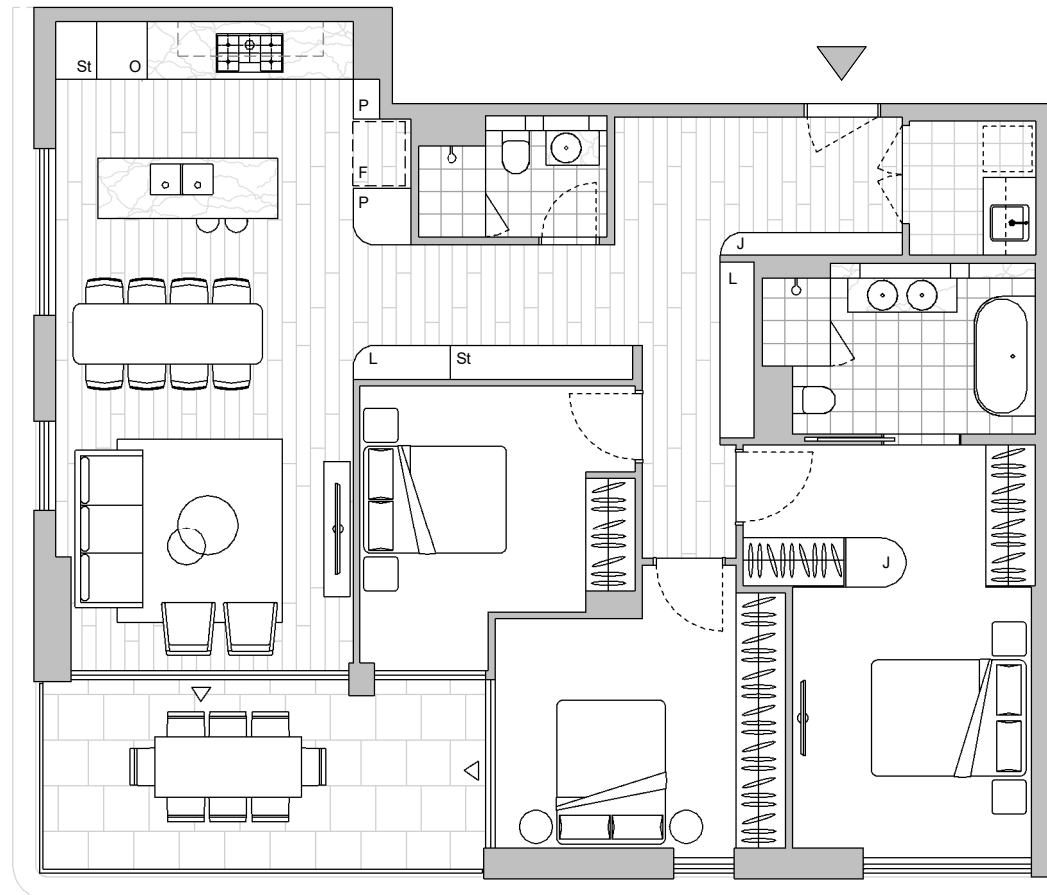
Legend - As Applicable

- |                   |             |            |
|-------------------|-------------|------------|
| ▲ Access          | F Fridge    | J Joinery  |
| △ Balcony Access  | P Pantry    | L Linen    |
| ** Sliding Screen | O Wall Oven | St Storage |
| * Fixed Screen    |             |            |

Provision of a water point, GPO (power point) and gas point has been made available to the balcony.



This floor plan was produced prior to construction and while the information contained herein is believed to be correct it is not guaranteed. Changes will undoubtedly be made in accordance with the contract for sale. The plan does not show additional features such as hot water systems, services, or Bulkheads necessary for services. Dimensions, areas, and scale of floor plans are approximate only and subject to the terms of the Contract. Areas calculated in accordance with the Strata Schemes Development Act 2015. The furniture and furnishings depicted are not included with any sale. Purchasers must refer to the contract for sale for the list of inclusions. Furnishings should not be taken to indicate the final position of power points, TV connection points and the like. All graphics, including design and extent of tile/paver/carpet areas, landscaping, balustrades, louvres, sun shading devices, privacy screens and services equipment are for illustrative purposes only and are not to be relied on as a representative of the final product. Plans do not show additional features within each lot such as letterboxes and side and rear retaining walls. All level changes in the courtyards may not have been shown.



**LEVEL 6**

Stratum Lot  
**1**

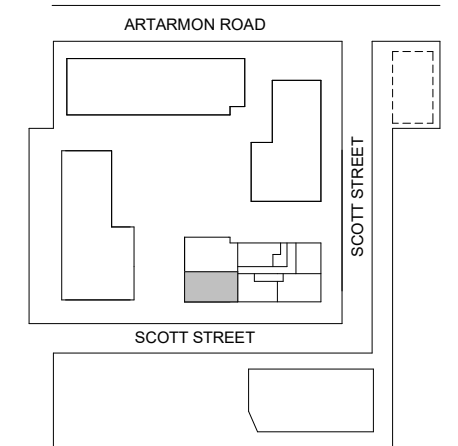
Strata Lot  
**45**

Colour Scheme: Premium C  
Floor Finish: Timber

**THREE BEDROOM APARTMENT**

Unit Area 115 m<sup>2</sup>  
Balcony Area 14 m<sup>2</sup>  
Total Area 129 m<sup>2</sup>

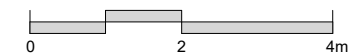
Areas subject to final survey. Area includes balcony, winter garden and courtyard where applicable. Area excludes associated parking and external storage areas.



Legend - As Applicable

- |                   |             |            |
|-------------------|-------------|------------|
| ▲ Access          | F Fridge    | J Joinery  |
| △ Balcony Access  | P Pantry    | L Linen    |
| ** Sliding Screen | O Wall Oven | St Storage |
| * Fixed Screen    |             |            |

Provision of a water point, GPO (power point) and gas point has been made available to the balcony.



This floor plan was produced prior to construction and while the information contained herein is believed to be correct it is not guaranteed. Changes will undoubtedly be made in accordance with the contract for sale. The plan does not show additional features such as hot water systems, services, or Bulkheads necessary for services. Dimensions, areas, and scale of floor plans are approximate only and subject to the terms of the Contract. Areas calculated in accordance with the Strata Schemes Development Act 2015. The furniture and furnishings depicted are not included with any sale. Purchasers must refer to the contract for sale for the list of inclusions. Furnishings should not be taken to indicate the final position of power points, TV connection points and the like. All graphics, including design and extent of tile/paver/carpet areas, landscaping, balustrades, louvres, sun shading devices, privacy screens and services equipment are for illustrative purposes only and are not to be relied on as a representative of the final product. Plans do not show additional features within each lot such as letterboxes and side and rear retaining walls. All level changes in the courtyards may not have been shown.

Stratum Lot  
**1**

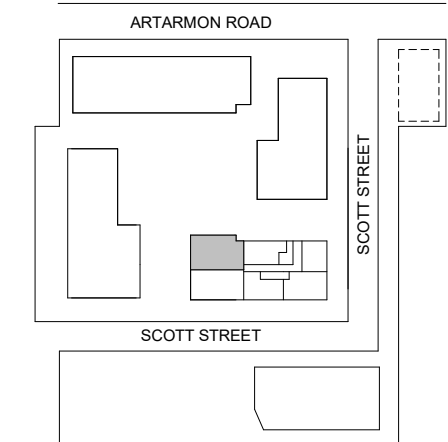
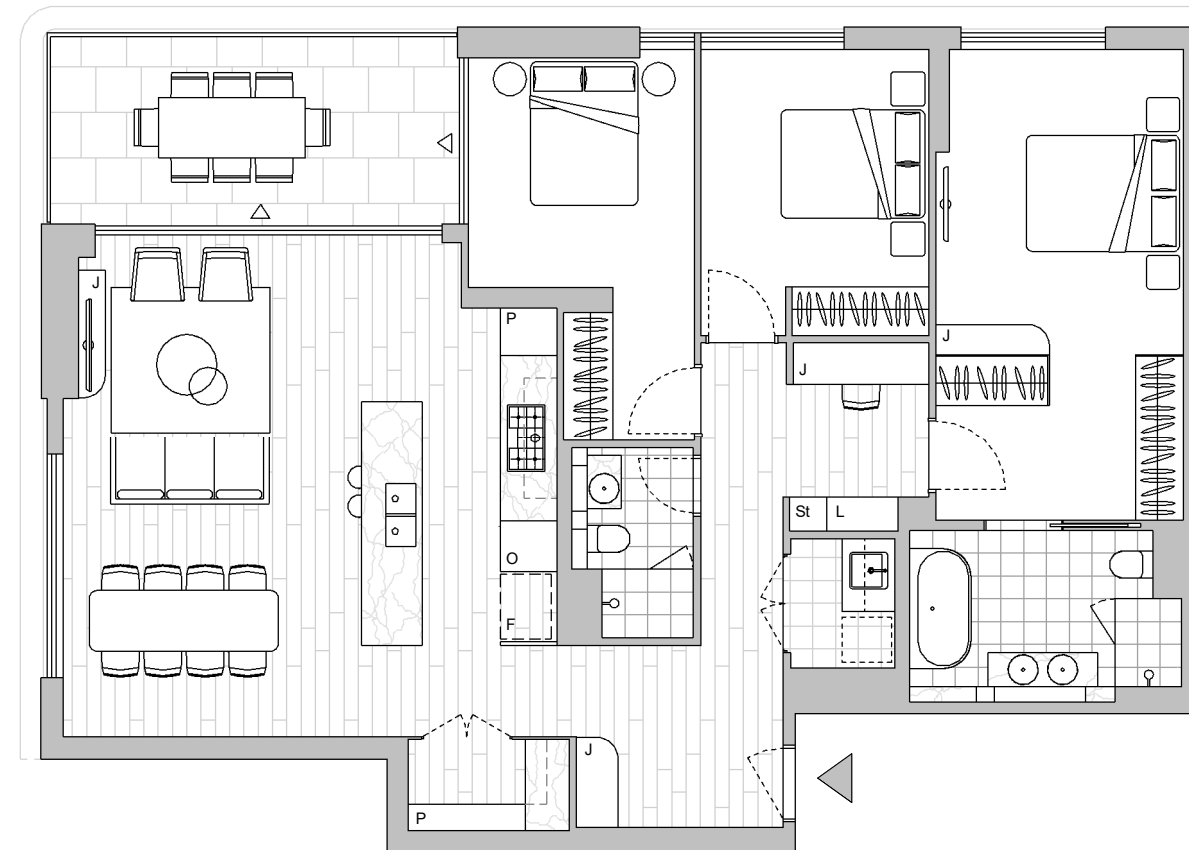
Strata Lot  
**46**

Colour Scheme: Premium C  
Floor Finish: Timber

**THREE BEDROOM + MEDIA APARTMENT**

Unit Area 122 m<sup>2</sup>  
Balcony Area 13 m<sup>2</sup>  
Total Area 135 m<sup>2</sup>

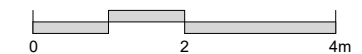
Areas subject to final survey. Area includes balcony, winter garden and courtyard where applicable. Area excludes associated parking and external storage areas.



Legend - As Applicable

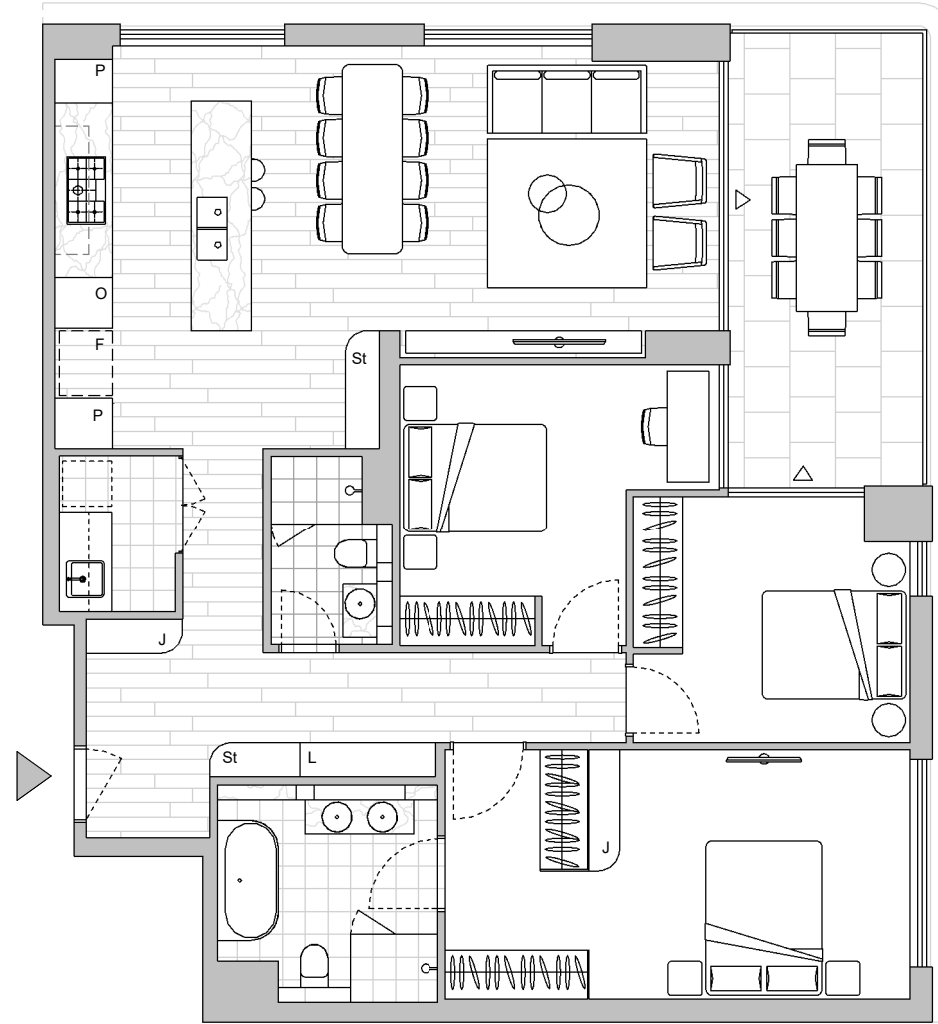
- |                   |             |            |
|-------------------|-------------|------------|
| ▲ Access          | F Fridge    | J Joinery  |
| △ Balcony Access  | P Pantry    | L Linen    |
| ** Sliding Screen | O Wall Oven | St Storage |
| * Fixed Screen    |             |            |

Provision of a water point, GPO (power point) and gas point has been made available to the balcony.



**LEVEL 6**

This floor plan was produced prior to construction and while the information contained herein is believed to be correct it is not guaranteed. Changes will undoubtedly be made in accordance with the contract for sale. The plan does not show additional features such as hot water systems, services, or Bulkheads necessary for services. Dimensions, areas, and scale of floor plans are approximate only and subject to the terms of the Contract. Areas calculated in accordance with the Strata Schemes Development Act 2015. The furniture and furnishings depicted are not included with any sale. Purchasers must refer to the contract for sale for the list of inclusions. Furnishings should not be taken to indicate the final position of power points, TV connection points and the like. All graphics, including design and extent of tile/paver/carpet areas, landscaping, balustrades, louvres, sun shading devices, privacy screens and services equipment are for illustrative purposes only and are not to be relied on as a representative of the final product. Plans do not show additional features within each lot such as letterboxes and side and rear retaining walls. All level changes in the courtyards may not have been shown.



LEVEL 7

Stratum Lot  
1

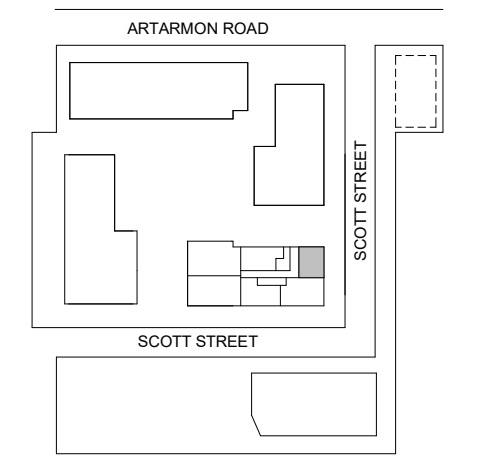
Strata Lot  
48

Colour Scheme: Premium C  
Floor Finish: Timber

**THREE BEDROOM APARTMENT**

Unit Area 120 m<sup>2</sup>  
Balcony Area 14 m<sup>2</sup>  
Total Area 134 m<sup>2</sup>

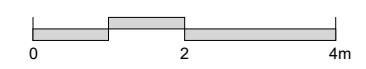
Areas subject to final survey. Area includes balcony, winter garden and courtyard where applicable. Area excludes associated parking and external storage areas.



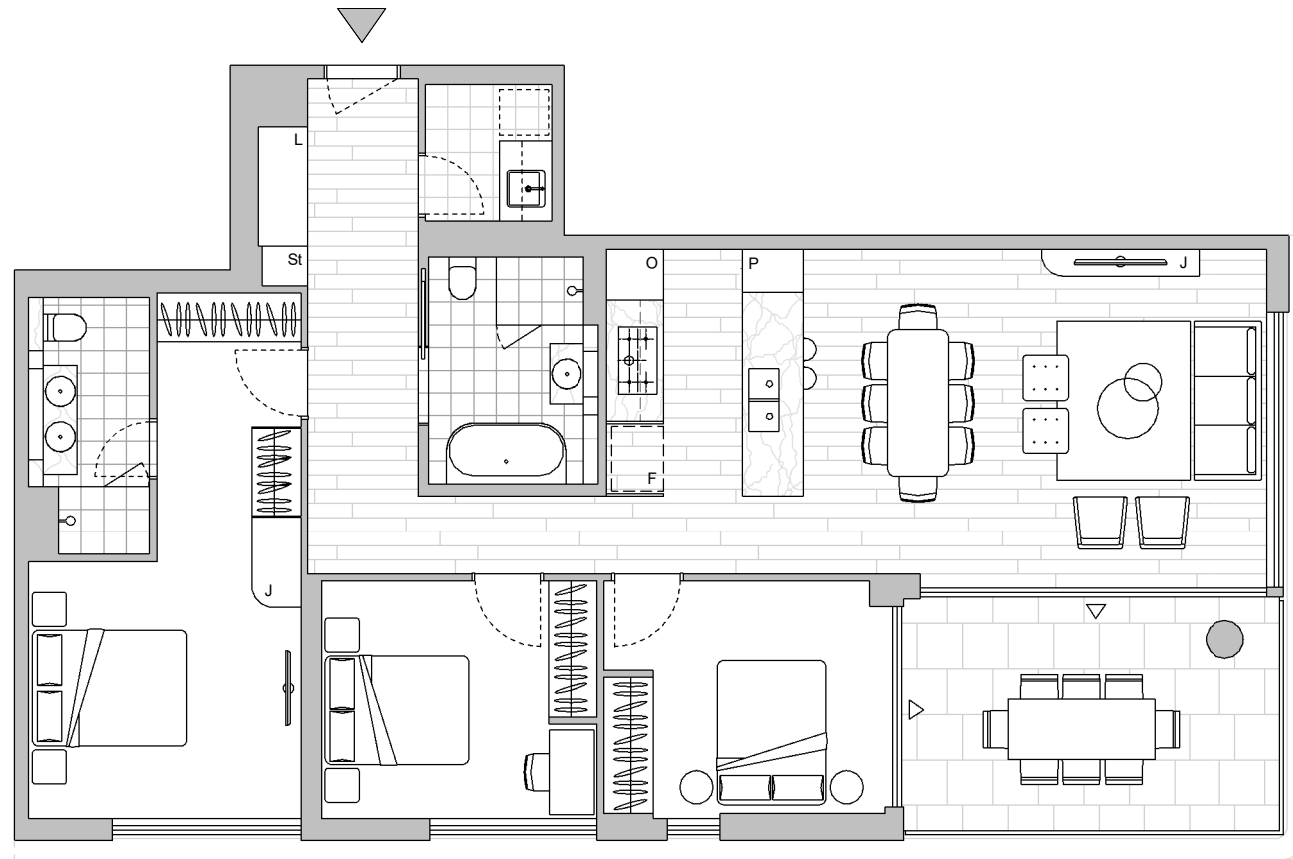
Legend - As Applicable

- |                   |             |            |
|-------------------|-------------|------------|
| ▲ Access          | F Fridge    | J Joinery  |
| △ Balcony Access  | P Pantry    | L Linen    |
| ** Sliding Screen | O Wall Oven | St Storage |
| * Fixed Screen    |             |            |

Provision of a water point, GPO (power point) and gas point has been made available to the balcony.



This floor plan was produced prior to construction and while the information contained herein is believed to be correct it is not guaranteed. Changes will undoubtedly be made in accordance with the contract for sale. The plan does not show additional features such as hot water systems, services, or Bulkheads necessary for services. Dimensions, areas, and scale of floor plans are approximate only and subject to the terms of the Contract. Areas calculated in accordance with the Strata Schemes Development Act 2015. The furniture and furnishings depicted are not included with any sale. Purchasers must refer to the contract for sale for the list of inclusions. Furnishings should not be taken to indicate the final position of power points, TV connection points and the like. All graphics, including design and extent of tile/paver/carpet areas, landscaping, balustrades, louvres, sun shading devices, privacy screens and services equipment are for illustrative purposes only and are not to be relied on as a representative of the final product. Plans do not show additional features within each lot such as letterboxes and side and rear retaining walls. All level changes in the courtyards may not have been shown.



LEVEL 7

Stratum Lot  
1

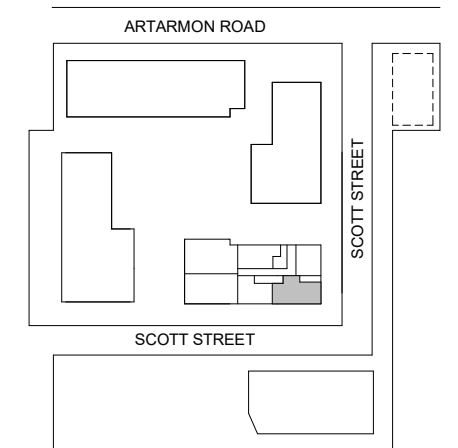
Strata Lot  
49

Colour Scheme: Premium C  
Floor Finish: Timber

**THREE BEDROOM APARTMENT**

Unit Area 113 m<sup>2</sup>  
Balcony Area 14 m<sup>2</sup>  
Total Area 127 m<sup>2</sup>

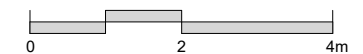
Areas subject to final survey. Area includes balcony, winter garden and courtyard where applicable. Area excludes associated parking and external storage areas.



Legend - As Applicable

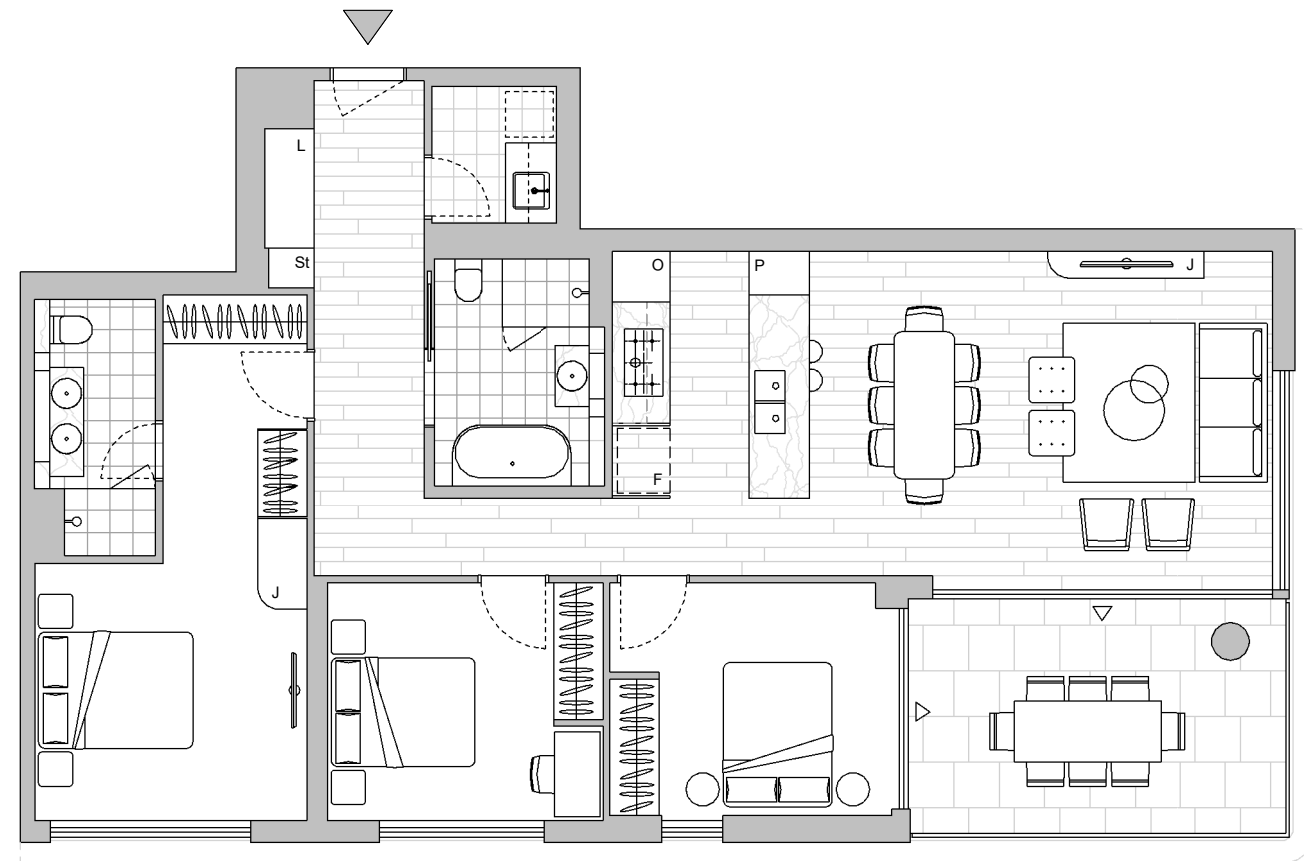
- |                   |             |            |
|-------------------|-------------|------------|
| ▲ Access          | F Fridge    | J Joinery  |
| △ Balcony Access  | P Pantry    | L Linen    |
| ** Sliding Screen | O Wall Oven | St Storage |
| * Fixed Screen    |             |            |

Provision of a water point, GPO (power point) and gas point has been made available to the balcony.



This floor plan was produced prior to construction and while the information contained herein is believed to be correct it is not guaranteed. Changes will undoubtedly be made in accordance with the contract for sale. The plan does not show additional features such as hot water systems, services, or Bulkheads necessary for services. Dimensions, areas, and scale of floor plans are approximate only and subject to the terms of the Contract. Areas calculated in accordance with the Strata Schemes Development Act 2015. The furniture and furnishings depicted are not included with any sale. Purchasers must refer to the contract for sale for the list of inclusions. Furnishings should not be taken to indicate the final position of power points, TV connection points and the like. All graphics, including design and extent of tile/paver/carpet areas, landscaping, balustrades, louvres, sun shading devices, privacy screens and services equipment are for illustrative purposes only and are not to be relied on as a representative of the final product. Plans do not show additional features within each lot such as letterboxes and side and rear retaining walls. All level changes in the courtyards may not have been shown.





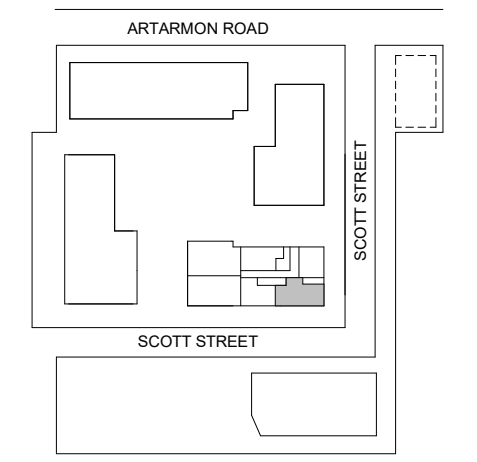
LEVEL 8

Stratum Lot 1  
 Colour Scheme: Premium A  
 Floor Finish: Timber

Strata Lot 55

**THREE BEDROOM APARTMENT**  
 Unit Area 113 m<sup>2</sup>  
 Balcony Area 14 m<sup>2</sup>  
 Total Area 127 m<sup>2</sup>

Areas subject to final survey. Area includes balcony, winter garden and courtyard where applicable. Area excludes associated parking and external storage areas.



- Legend - As Applicable
- |                   |             |            |
|-------------------|-------------|------------|
| ▲ Access          | F Fridge    | J Joinery  |
| △ Balcony Access  | P Pantry    | L Linen    |
| ** Sliding Screen | O Wall Oven | St Storage |
| * Fixed Screen    |             |            |

Provision of a water point, GPO (power point) and gas point has been made available to the balcony.



This floor plan was produced prior to construction and while the information contained herein is believed to be correct it is not guaranteed. Changes will undoubtedly be made in accordance with the contract for sale. The plan does not show additional features such as hot water systems, services, or Bulkheads necessary for services. Dimensions, areas, and scale of floor plans are approximate only and subject to the terms of the Contract. Areas calculated in accordance with the Strata Schemes Development Act 2015. The furniture and furnishings depicted are not included with any sale. Purchasers must refer to the contract for sale for the list of inclusions. Furnishings should not be taken to indicate the final position of power points, TV connection points and the like. All graphics, including design and extent of tile/paver/carpet areas, landscaping, balustrades, louvres, sun shading devices, privacy screens and services equipment are for illustrative purposes only and are not to be relied on as a representative of the final product. Plans do not show additional features within each lot such as letterboxes and side and rear retaining walls. All level changes in the courtyards may not have been shown.